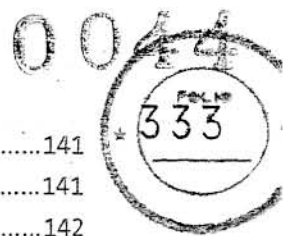
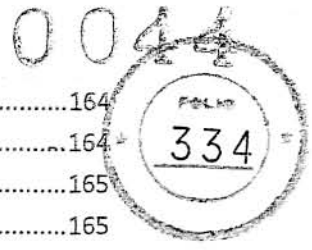


G14	DC circuit breaker	118
G15	DC circuit breaker	118
G16	DC circuit breaker	119
G17	DC circuit breaker	119
G18	DC circuit breaker	120
G19	DC circuit breaker	120
G20	DC circuit breaker	121
G21	AC circuit breaker	121
G22	AC circuit breaker	122
G23	AC circuit breaker	122
G24	Transfer switch	123
G25	Transfer switch	123
G26	Transfer switch	124
G27	Button	124
G28	Button	125
G29	Button	125
G30	Lead sealing with wire.....	126
G31	Rotary switch	127
G32	CAM switch.....	127
G33	Rotary switch	127
G34	Rotary switch	128
G35	Rotary switch	128
G36	Rotary switch	129
G37	Rotary switch	129
G38	Vigilance switch.....	130
G39	Pedal switch.....	130
G40	Button controller	131
G41	Button controller	132
G42	Button controller	132
G43	Button controller	133
G45	Button controller	133
G46	Emergency button controller	134
G47	Button switch layer.....	134
G48	Button controller	135
G49	Press Button With Lamp.....	135
G50	Outage time-delay relay.....	136
G51	Relay socket	136
G52	Instantaneous relay	137
G53	Instantaneous relay	137
G54	Relay socket	138
G55	H Relay.....	138
G56	Double-break Relay.....	139
G58	LED module	140
G59	Thermo-magnetic relay.....	140



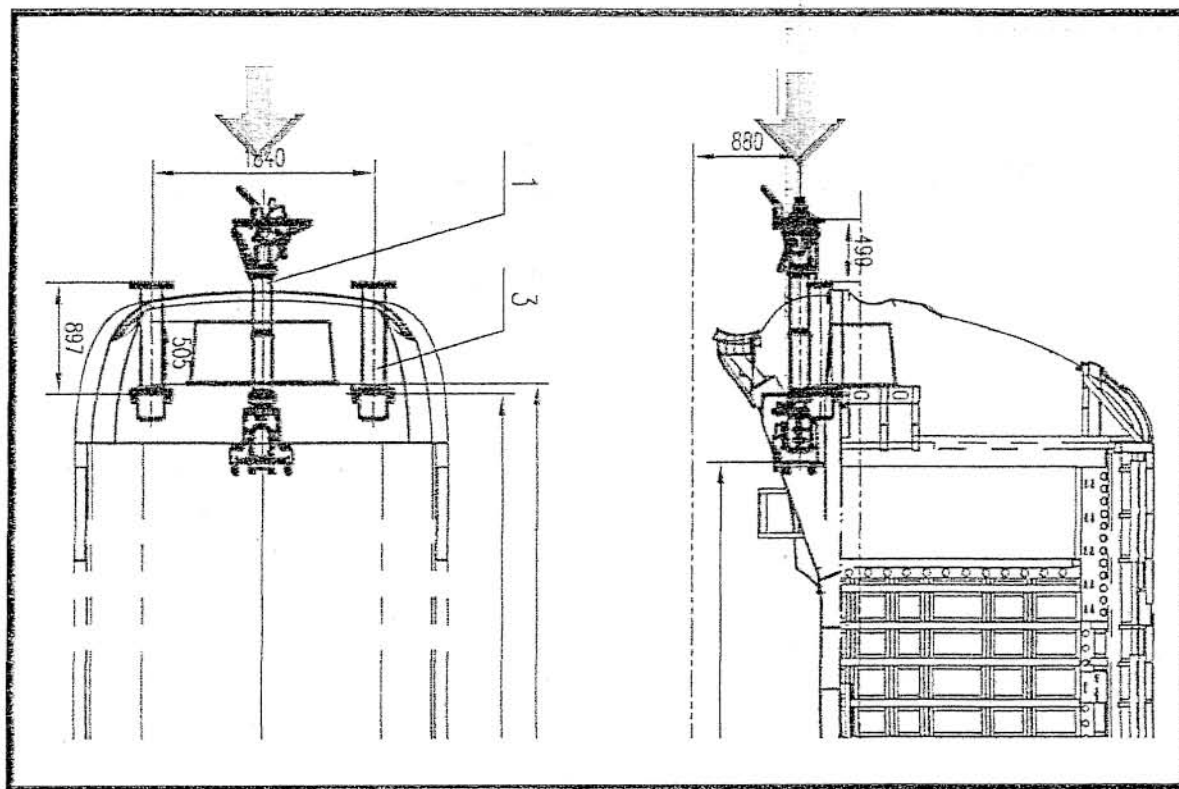
G60	Auxiliary contact.....	141
G61	Auxiliary contact of contactor.....	141
G62	Contactor.....	142
G63	Air compressor contactor.....	142
G64	Counter current component 1.....	143
G65	Counter current component 2.....	143
G66	DC1500V voltmeter.....	144
G67	Battery voltmeter.....	144
G68	Trainbore Display & Announcement Control System Unit-ACSU.....	145
G69	SCU.....	145
G70	PA Control panel DACU.....	146
G71	Passenger emergency call unit - PECU.....	146
G72	Gooseneck Mic-MIC.....	147
G73	Cab Speaker.....	147
G74	Saloon Speaker.....	148
G75	Internal Display Unit-IDU.....	148
G76	Front Display Unit-FDU.....	149
G77	Internal Camera.....	150
G78	Front Camera.....	150
G79	Touch Screen.....	151
G80	Pickup.....	152
G81	Electronic map in door area LMDU (left).....	152
G82	Electronic map in door area LMDU (right).....	153
G83	Dynamic map film (left).....	153
G84	Dynamic map film (right).....	154
G85	CCD (Current collect device) (left).....	154
G86	CCD (Current collect device) (right).....	155
G87	Traction motors.....	155
G88	Speed sensor.....	156
G89	Main isolating switch.....	156
G90	Line inductor.....	157
G91	Braking resistor.....	157
G92	Workshop power supply socket.....	158
G93	EVR.....	158
G94	HSCB.....	159
G95	Master controller.....	159
G97	Brake chopper module.....	160
G98	Power module.....	160
G99	Door controller module.....	161
G100	Interface module.....	161
G101	Bus high breaker (BHB).....	162
G102	Auxiliary isolating switch box.....	162
G103	Auxiliary inverter.....	163
G104	Inverter module (SIV power module).....	163



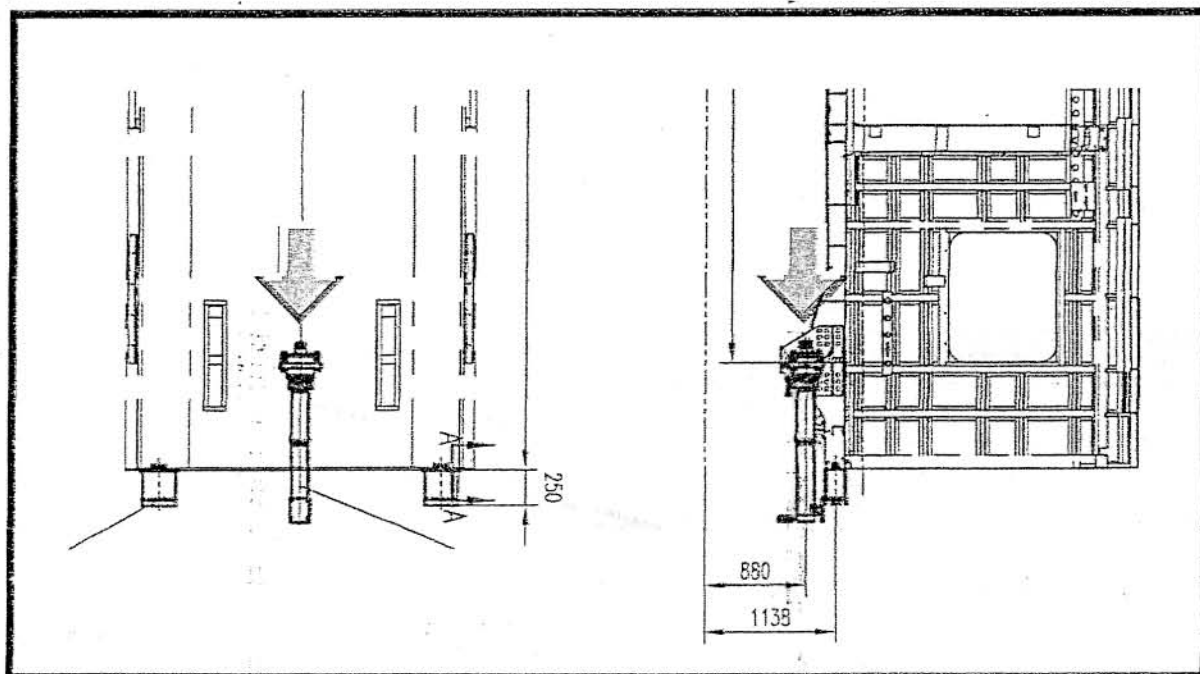
G105	SIV relay module	164
G106	Input circuit module (SG module).....	164
G107	BTH module (CG module).....	165
G108	ACC module	165
G109	BCG module	166
G110	Relay module for BCG	166
G111	DC24V output power supply (PS).....	167
G112	SIV fuse	167
G113	Battery charger box	168
G114	Extended service box.....	168
G115	SPS (train side)	169
G116	IVHB box	169
G117	Arrester.....	170
G118	Trunk module.....	170
G119	GWMe module.....	171
G120	Remote communication module.....	171
G121	Analog I/O module.....	171
G122	Digital input module.....	172
G123	Digital I/O module	172
G124	TCMS display system	173
G125	Fuse box assembly for bus in workshop.....	173
G126	Voltage sensor	174
Part H	Door Control Pannel	175
H1	Guard key	175
H2	Door Operational Button (Green).....	175
H3	Door Operational Button (Red)	176
H4	Door Operational Button (Black).....	176

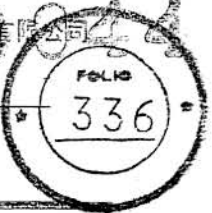
Part A Carbody

A1 Semi-automatic coupler

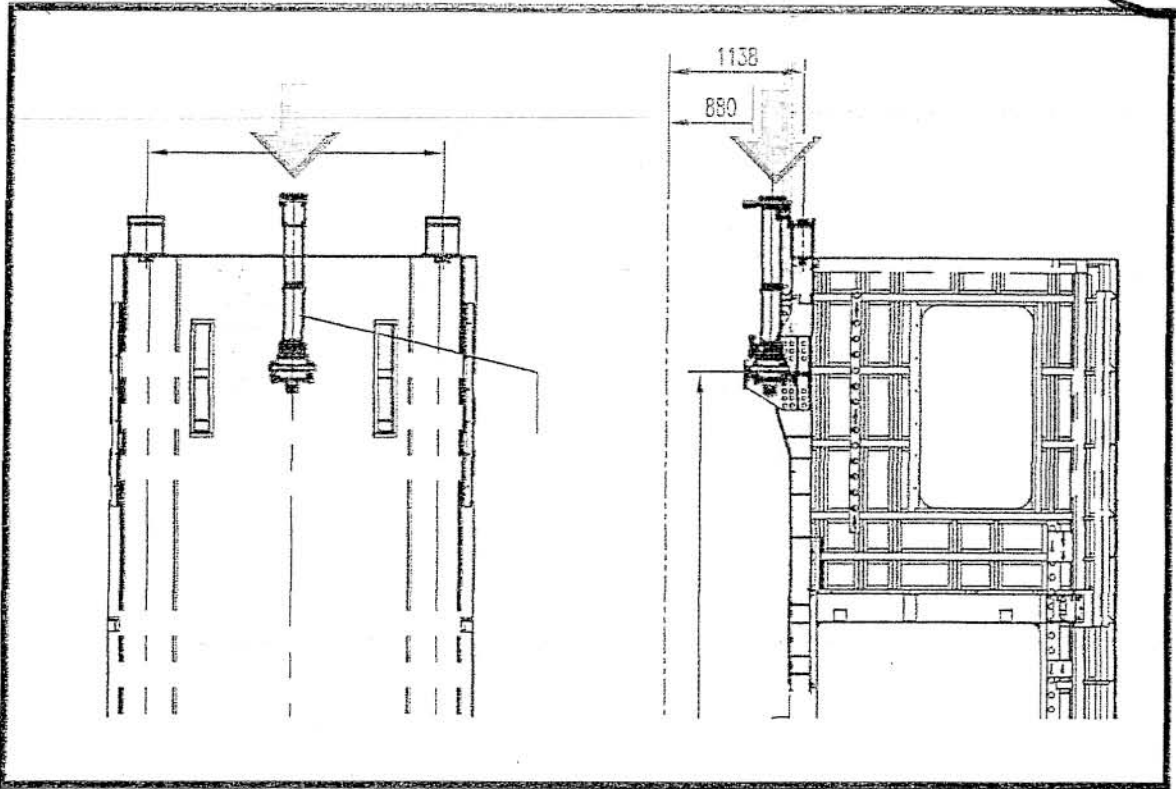


A2 Semi-permanent coupler (I)



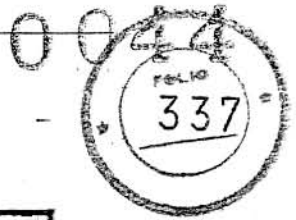


A3 Semi-permanent coupler (II)





Part B Interior



B2 Floor covering 1000X22000

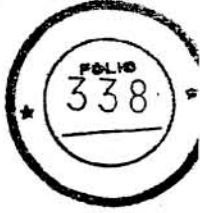


B3 Floor covering 1000X22000



B5 Saloon seat assembly (left)

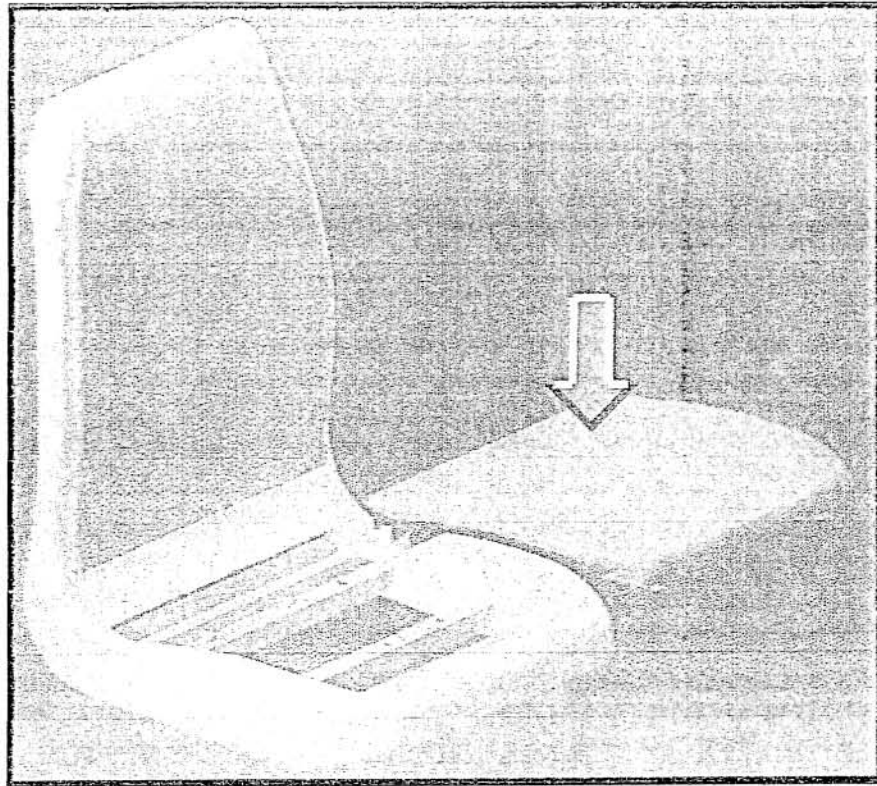
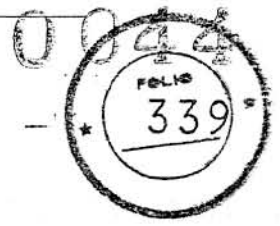
0044



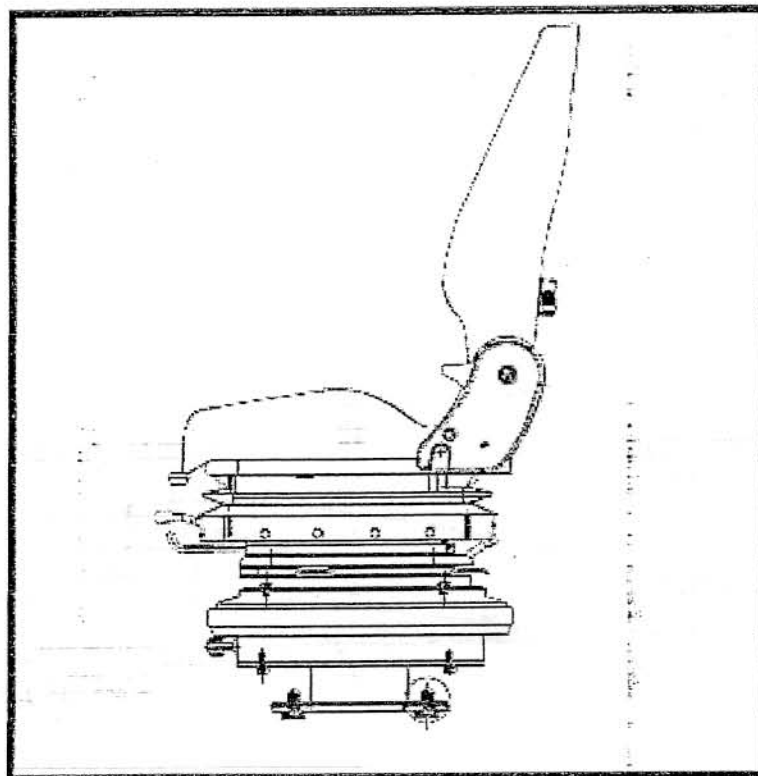
B6 Saloon seat assembly (right)



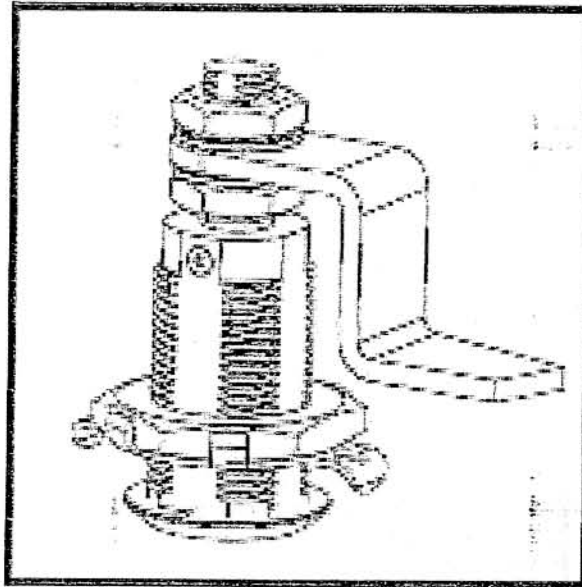
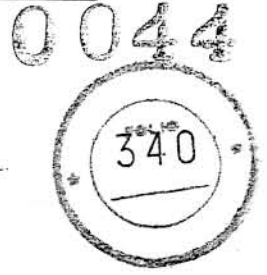
B7 Saloon seat cushion



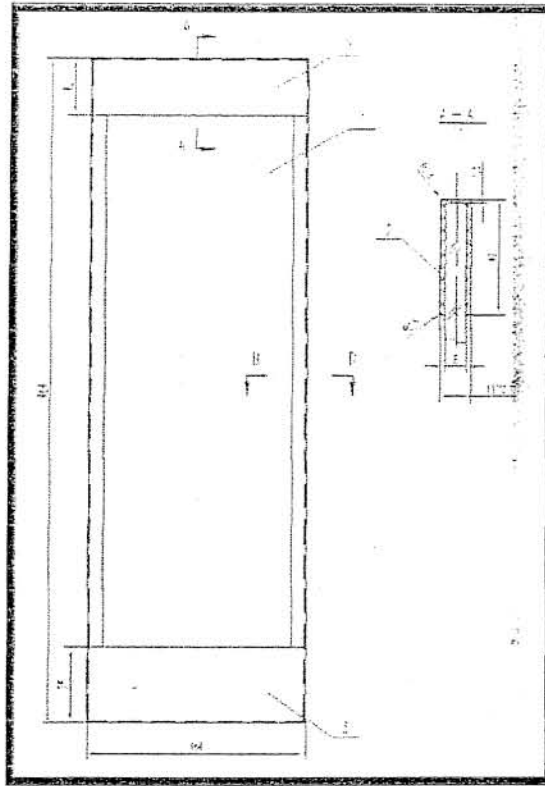
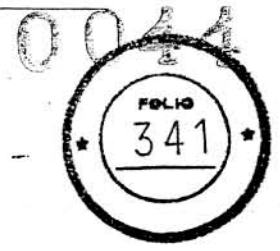
B8 Driver's seat



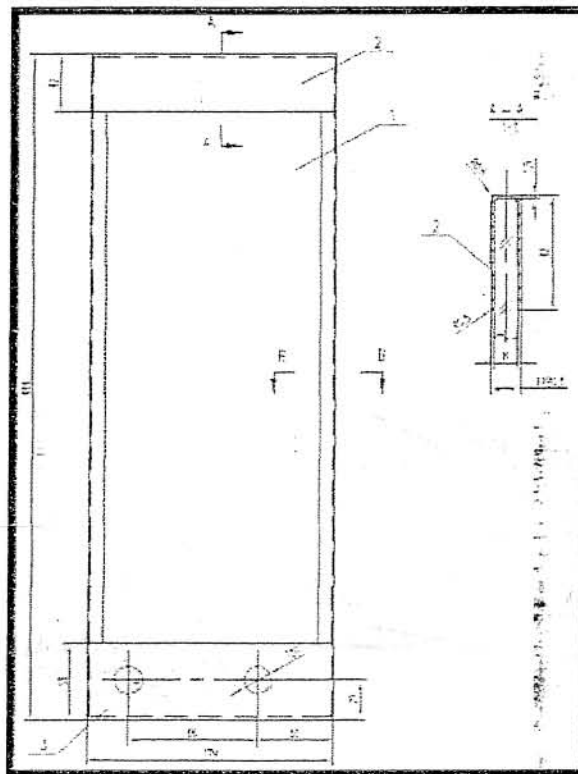
- B9 Pressing lock assembly (right, a=24)
- B10 Pressing lock assembly (left, a=24)
- B11 Pressing lock assembly (right, a=30)
- B12 Pressing lock assembly (left, a=30)
- B13 Pressing lock assembly (right, a=13)
- B14 Pressing lock assembly (left, a=13)
- B15 Pressing lock assembly (right, a=19)
- B16 Pressing lock assembly (left, a=19)
- B17 Pressing lock assembly (left, a=21)
- B18 Pressing lock assembly (right, a=23)
- B19 Pressing lock assembly (left, a=23)



B20 Decoration panel (1)

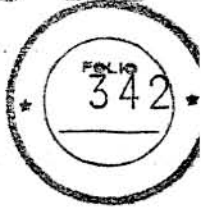


B21 Decoration panel (2)

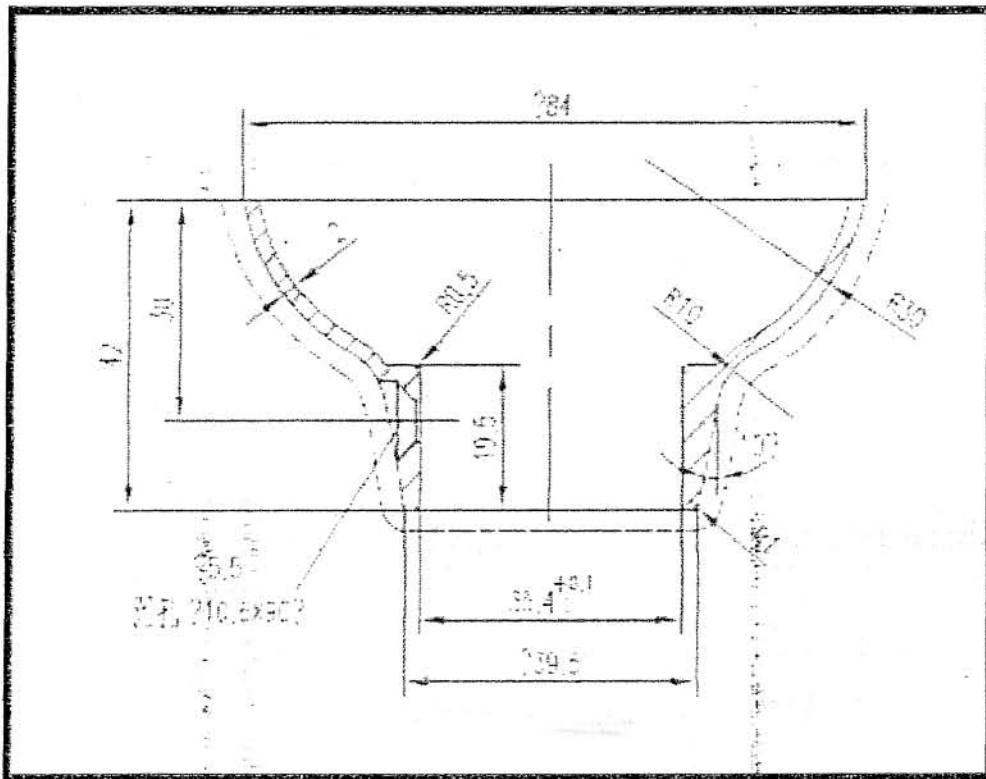


B22 Seat

0044



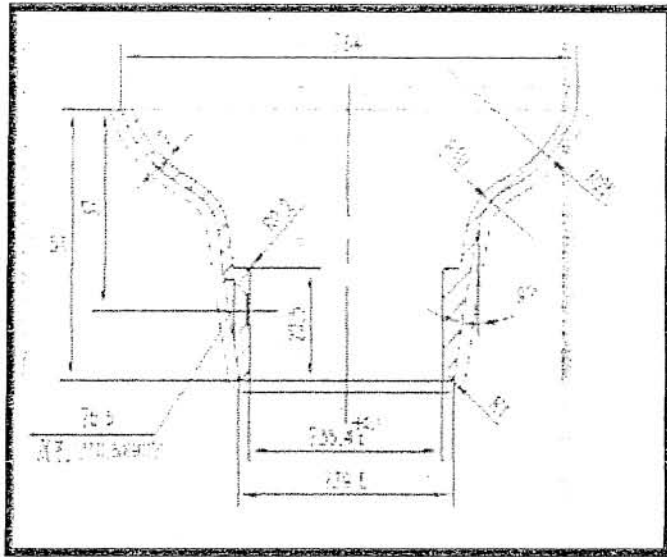
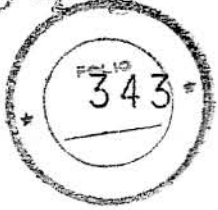
B23 Decoration cover (1)



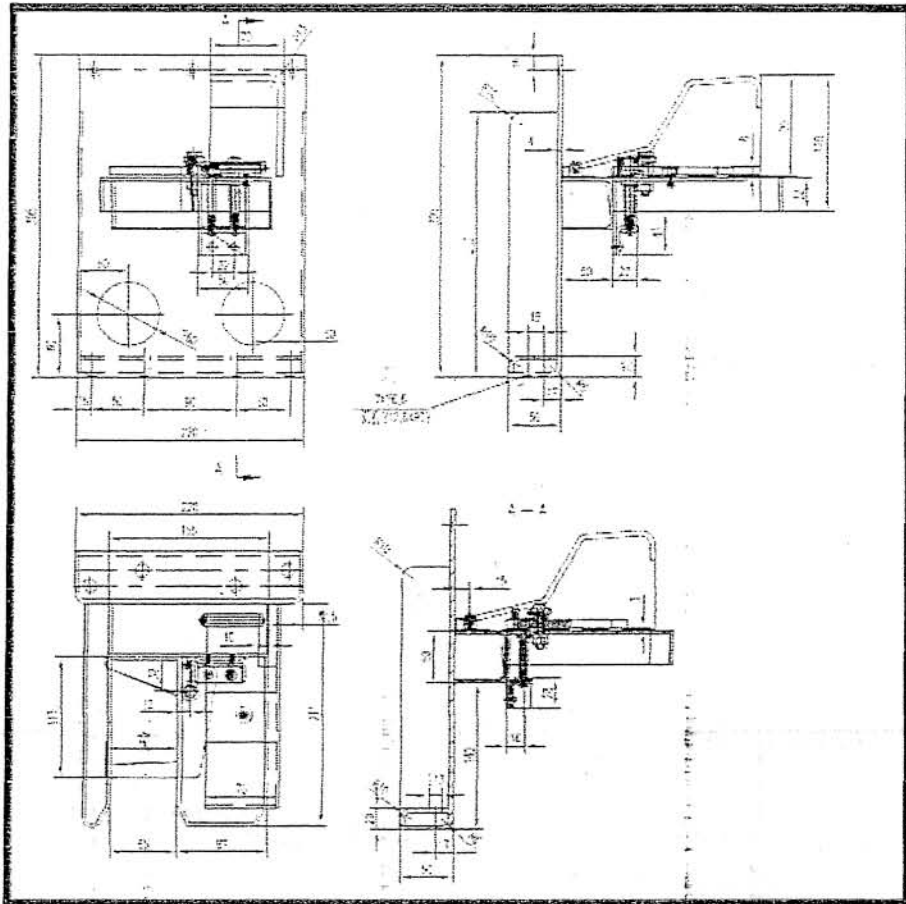


B24 Decoration cover (2)

0044

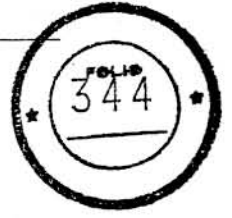


B25 Securing device for wheelchair (1)

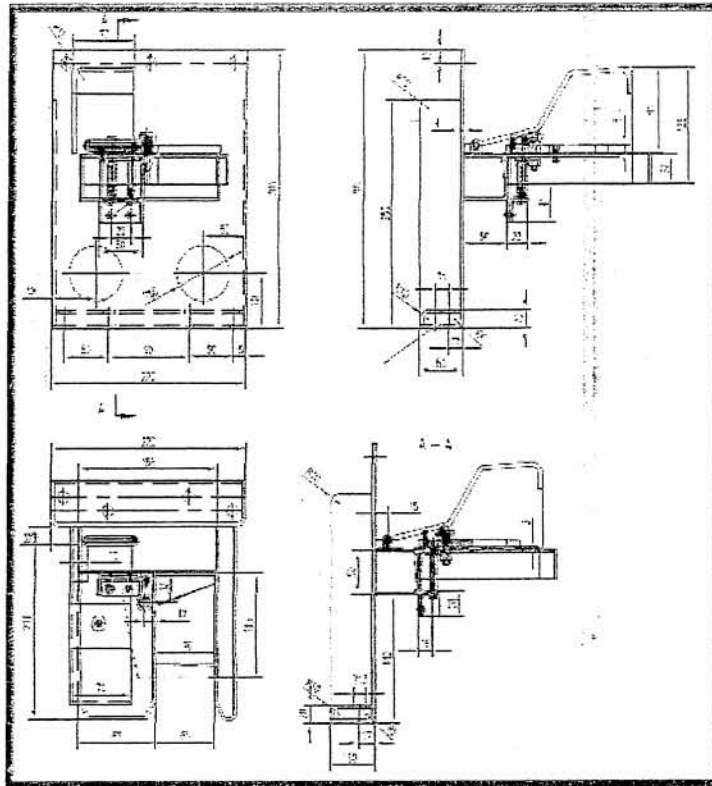




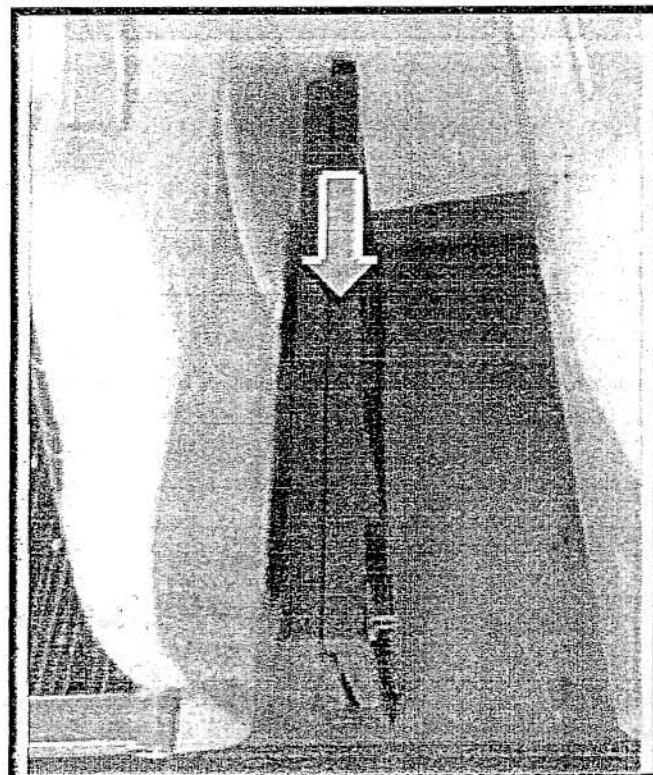
U U 4 4



B26 Securing device for wheelchair (2)

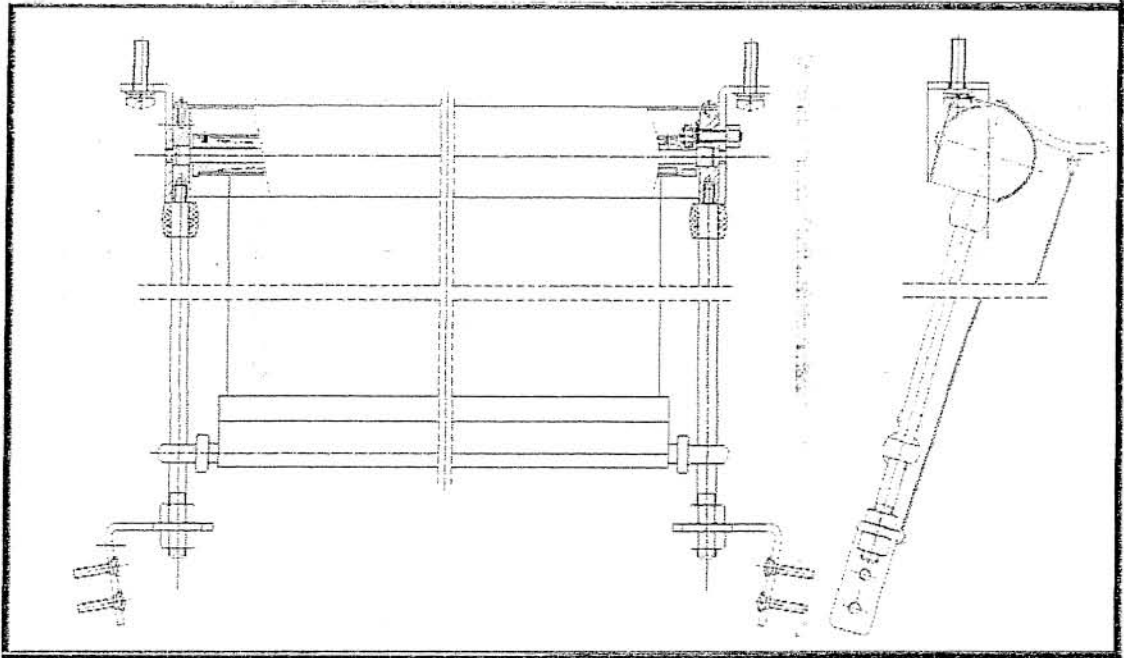


B27 Emergency ladder assembly

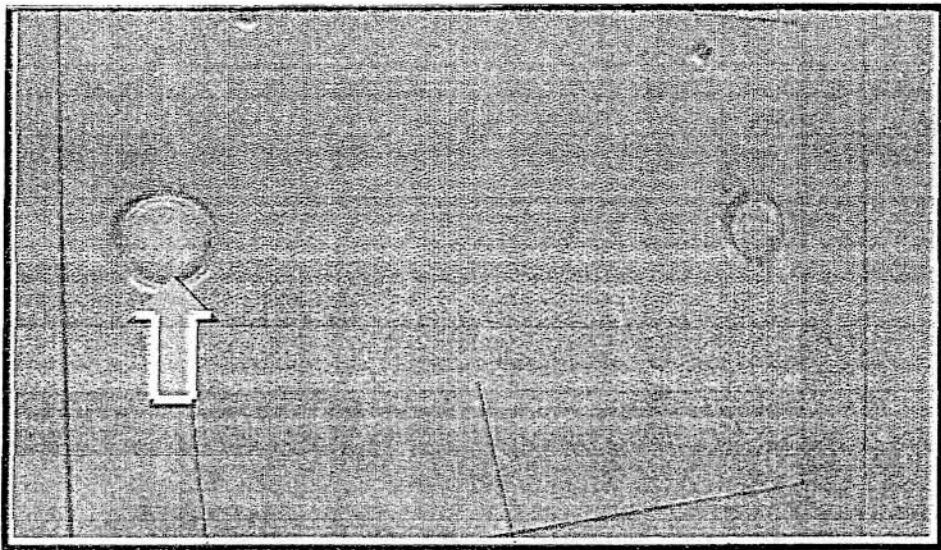


0044

B28 Sun shade assembly



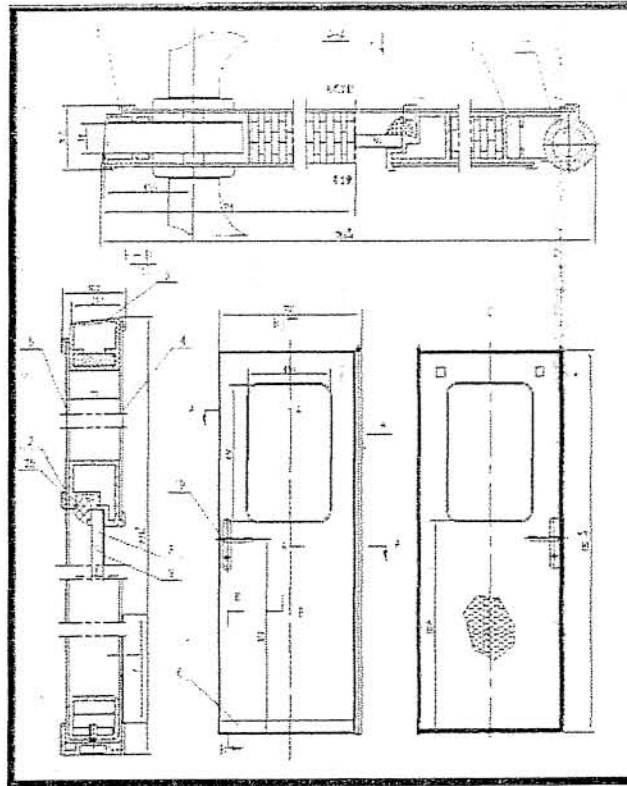
B29 Tube light



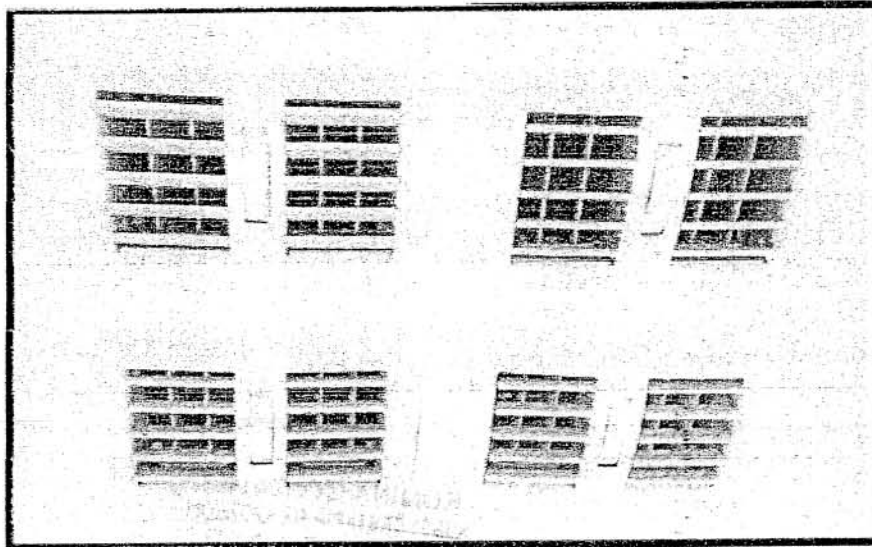


0044
FOLIO
346

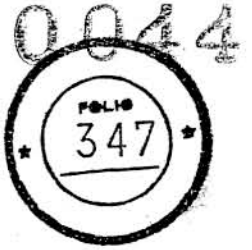
B30 Door assembly



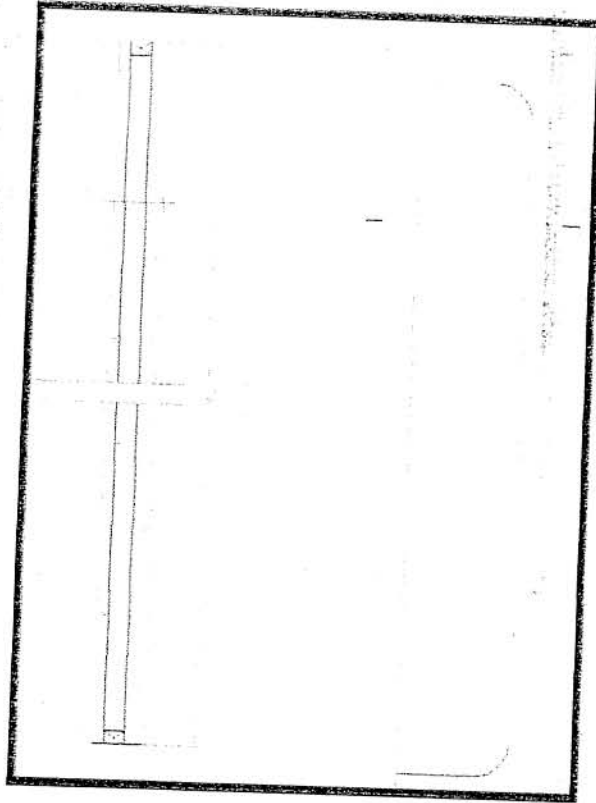
B31 Supply air outlet of cab



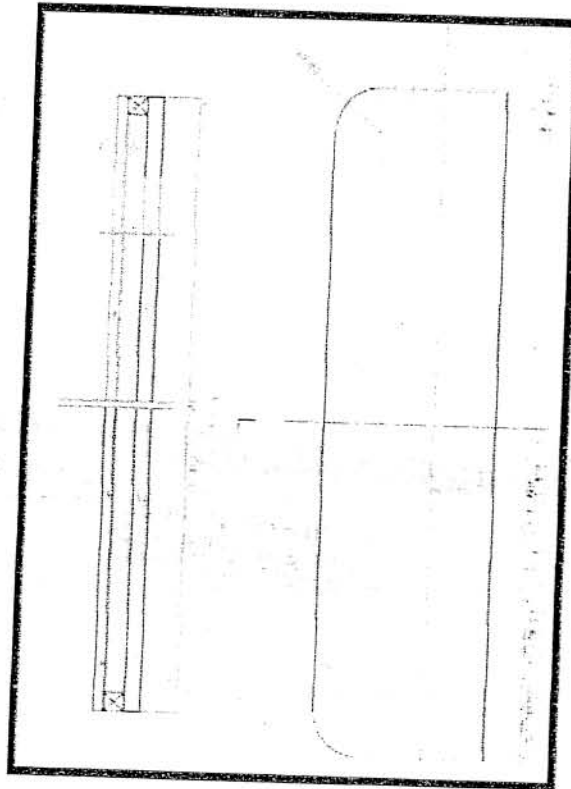
Part C Exterior



C2 Active leaf glass

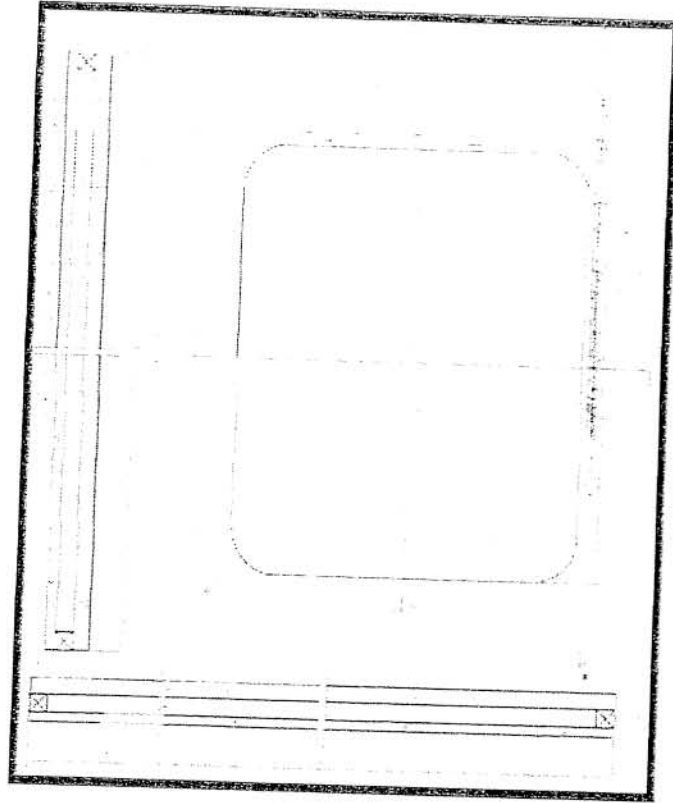


C3 Fixed window glass reserve

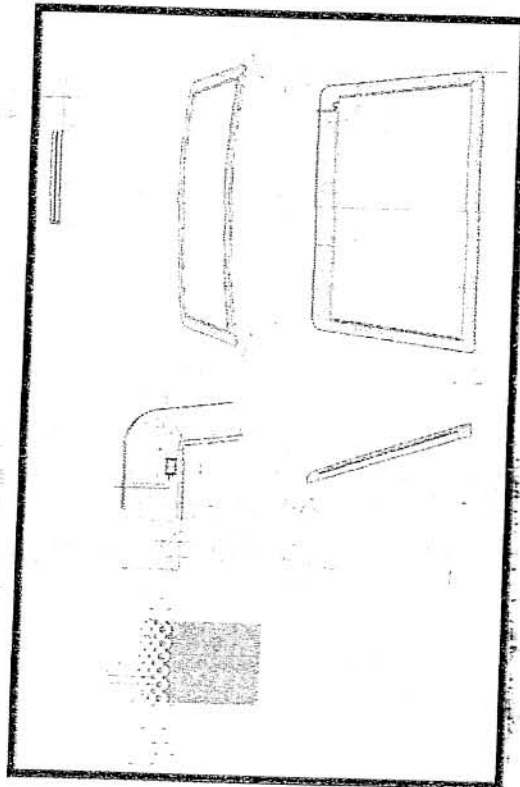


0044
* 348 *

C4 Active window glass assembly

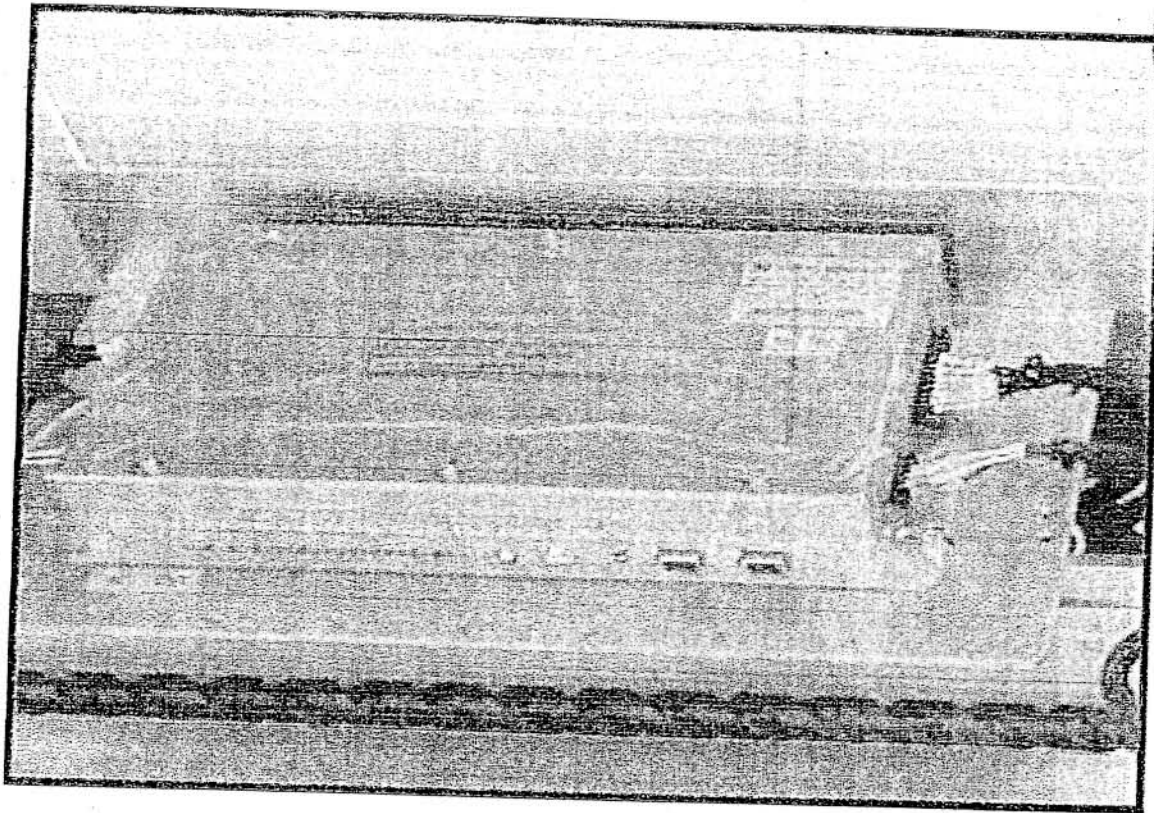


C5 Windscreen

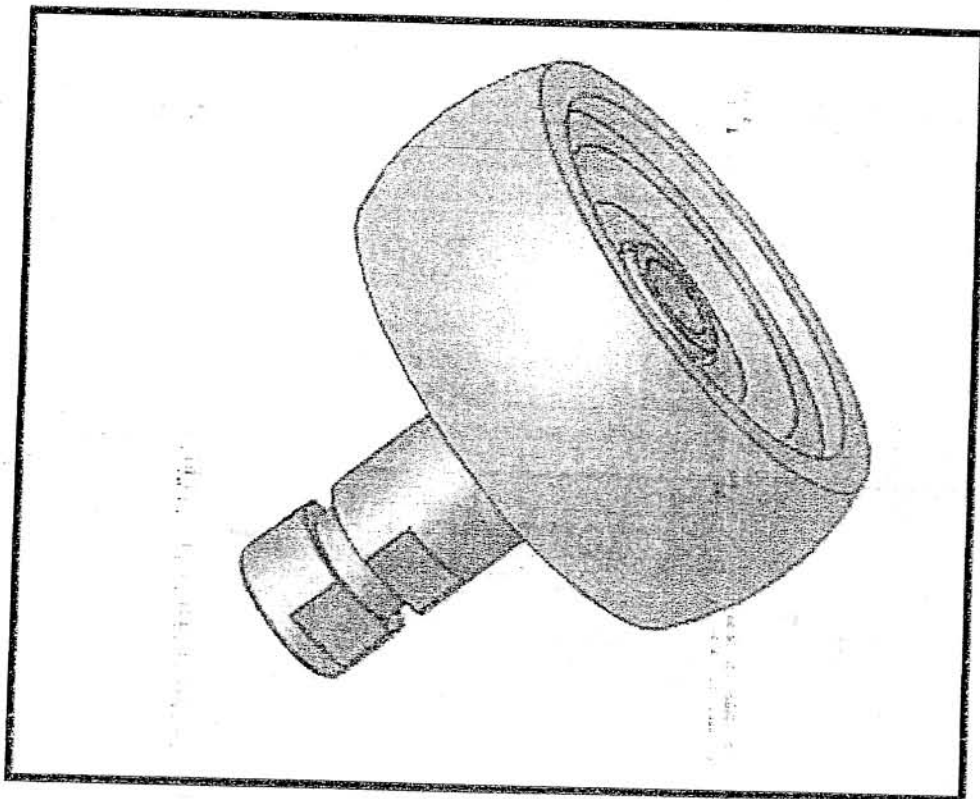


0044
FOLIO
349

C7 Door controller



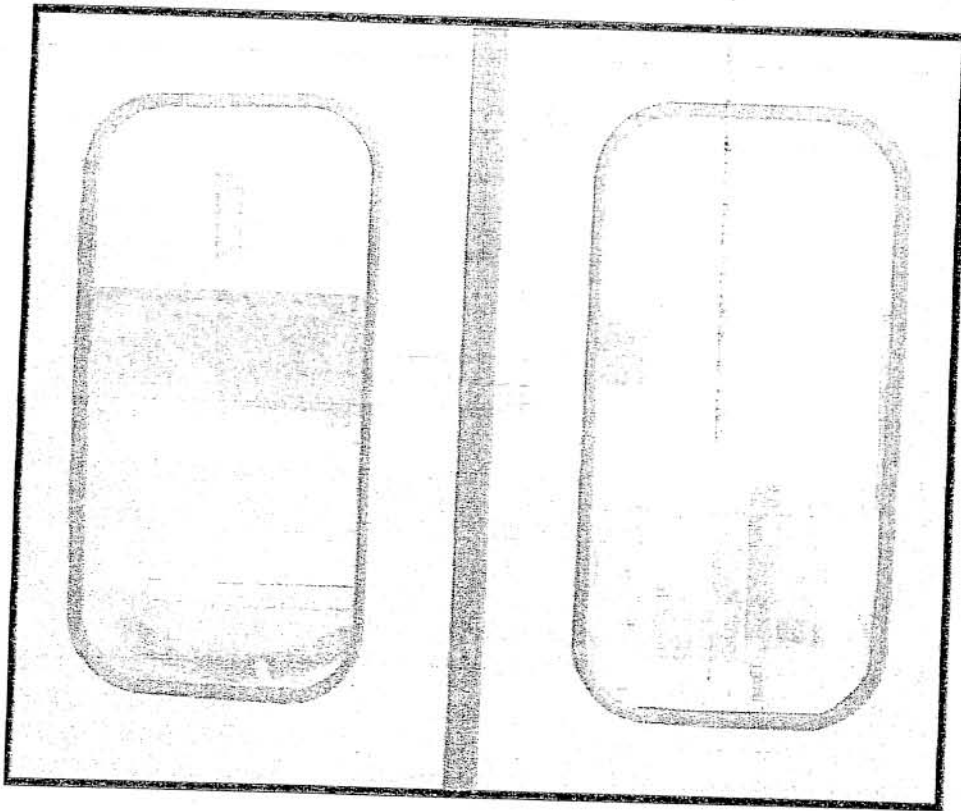
C8 Anti-jumping wheel assembly



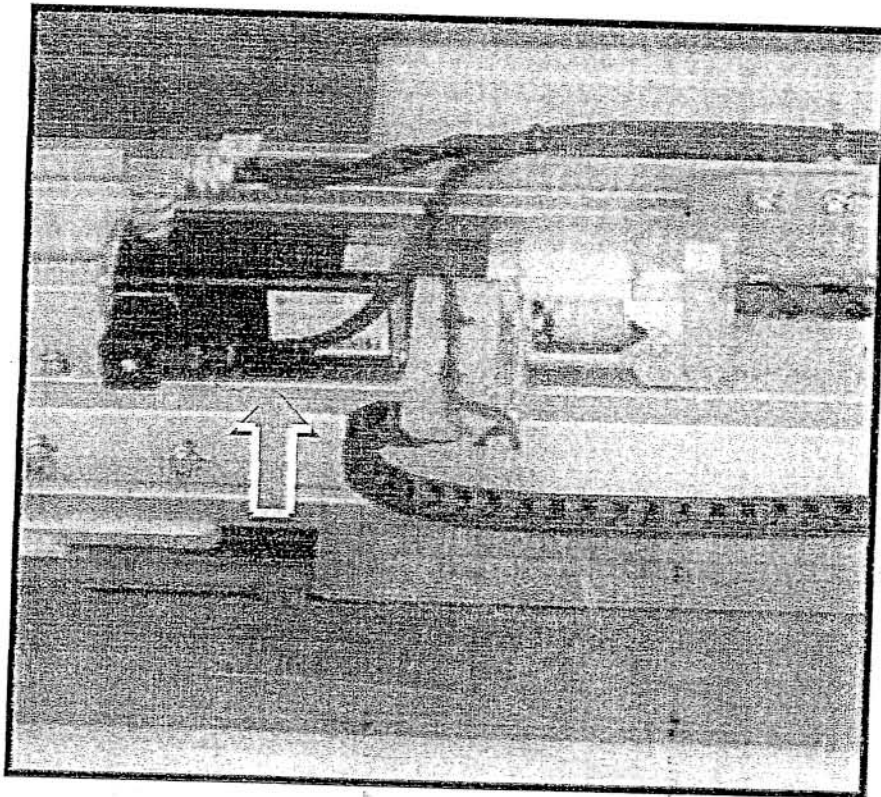


C9 Door window glass

0044



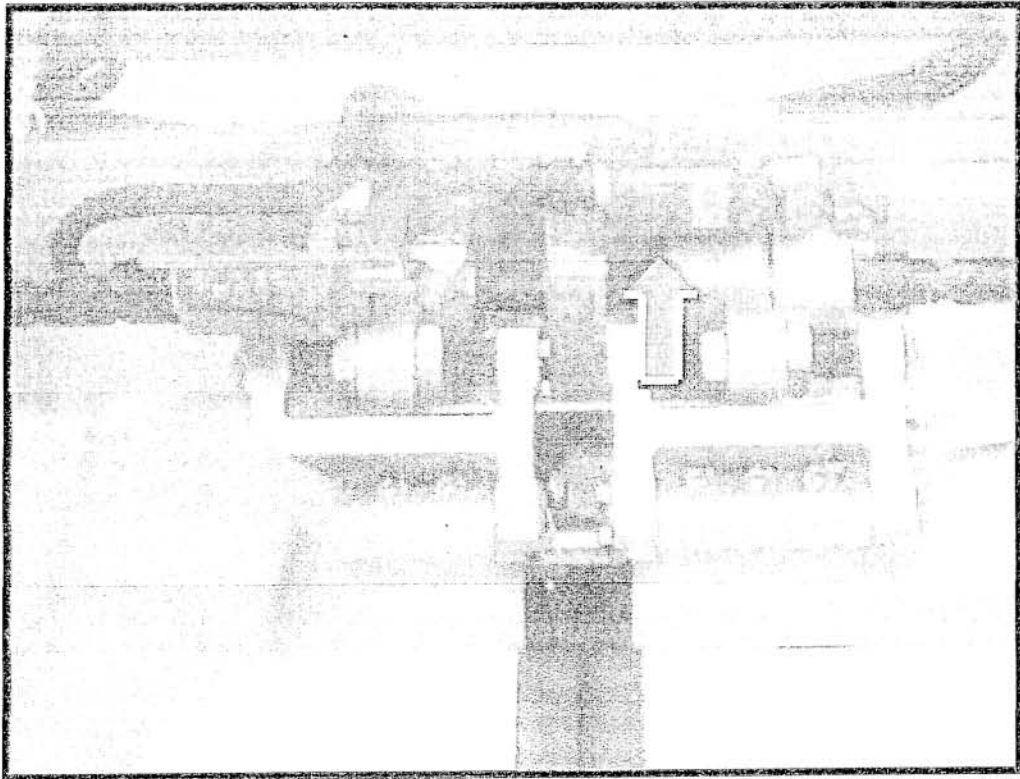
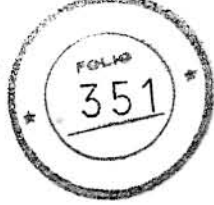
C10 Motor assembly



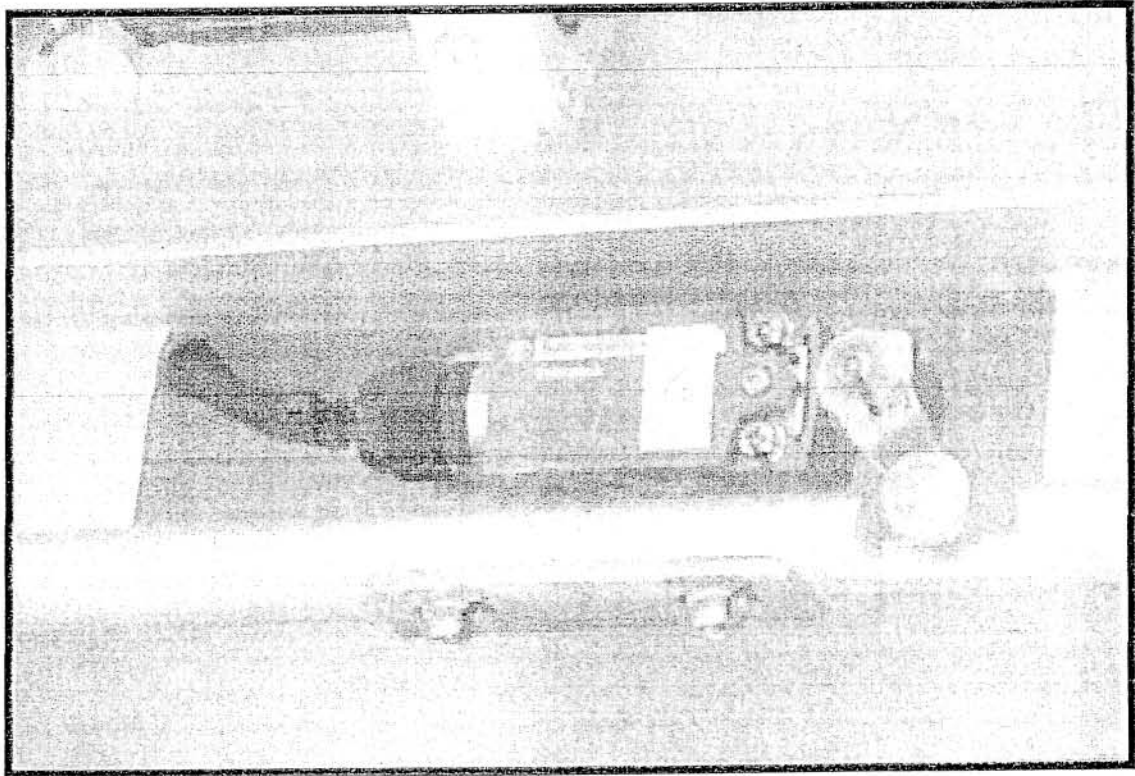


C11 Door open position switch

0044

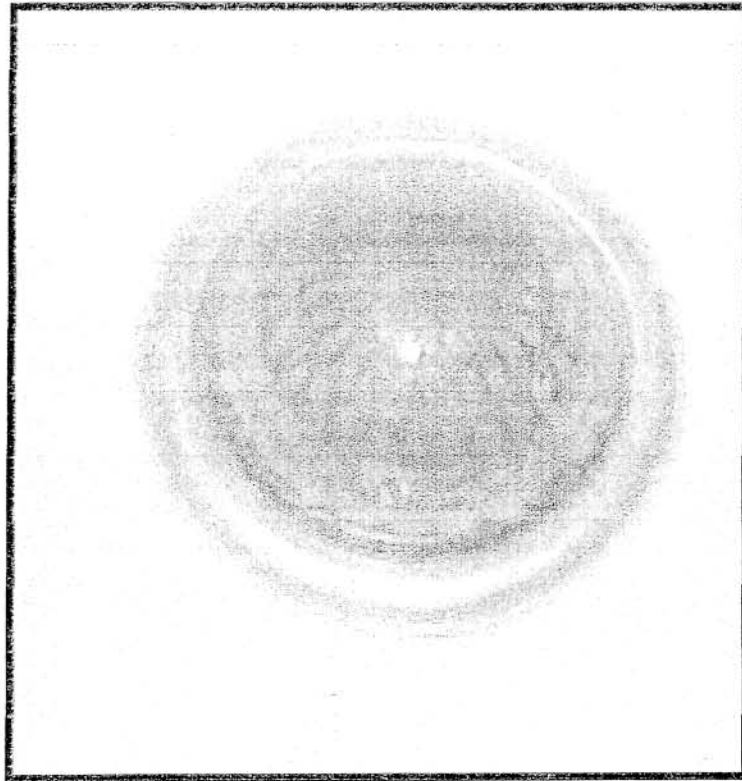
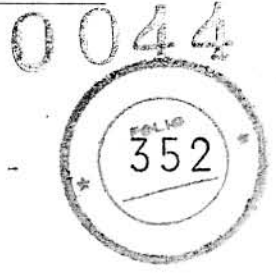


C12 Isolating switch

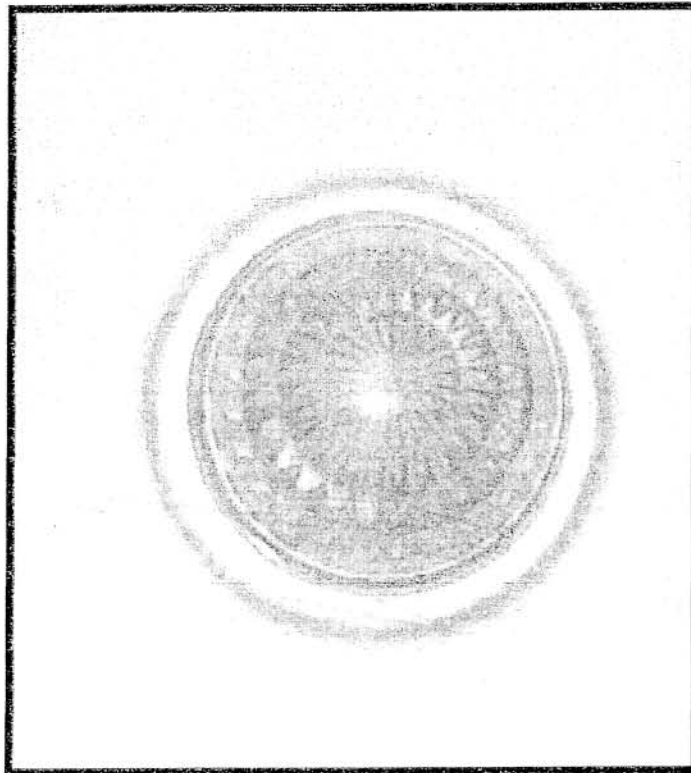




C13 Indicator light (red)

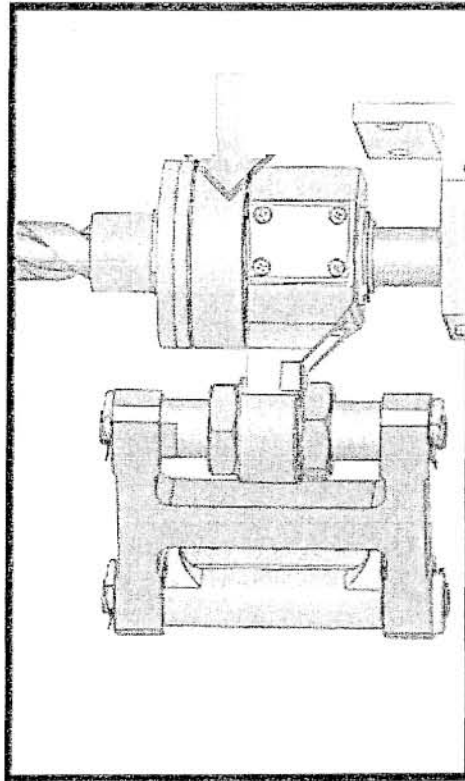
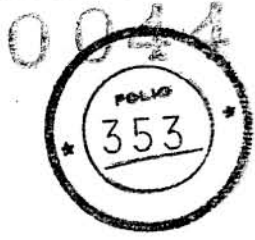


C14 Indicator light (orange)

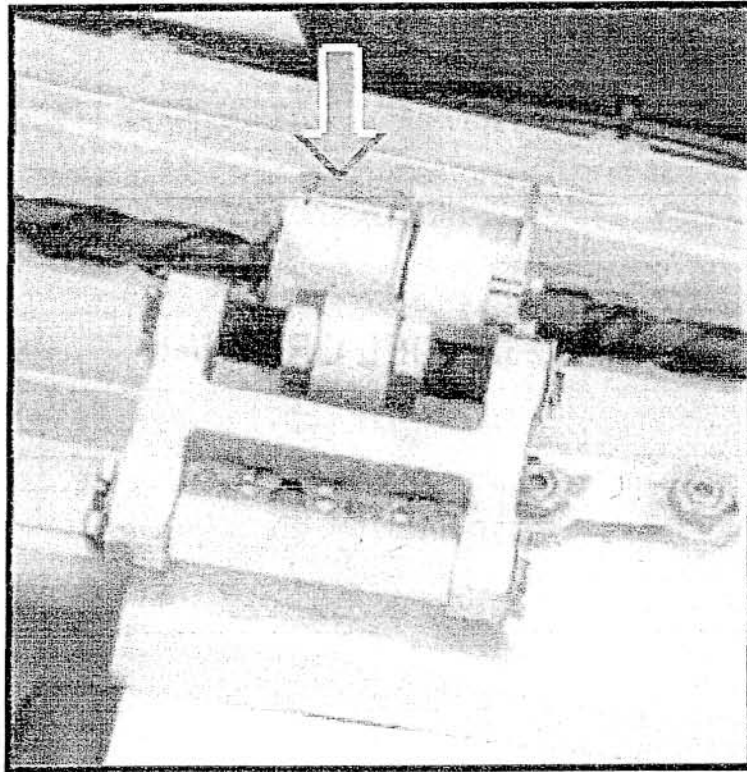




C15 Left-handed nut assembly

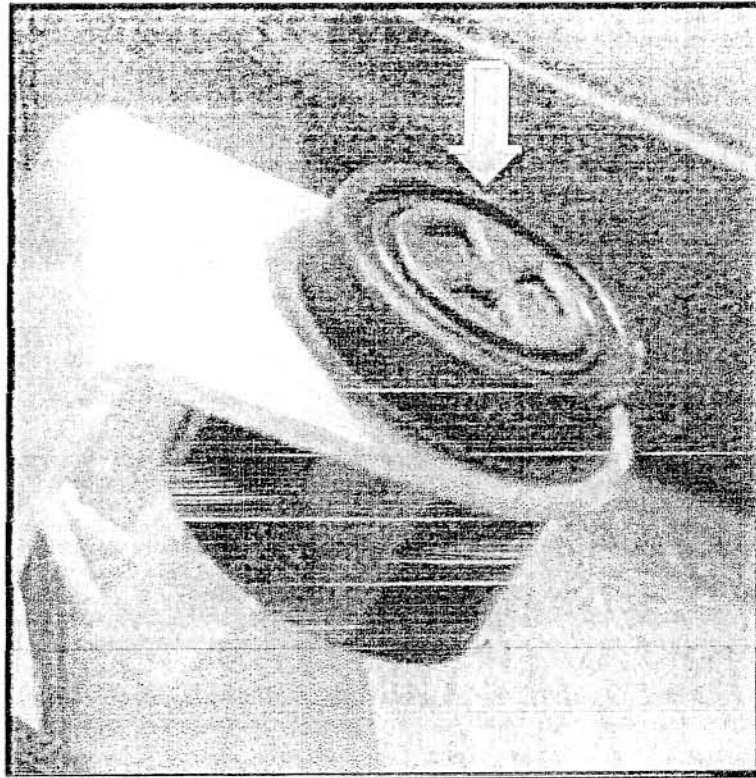
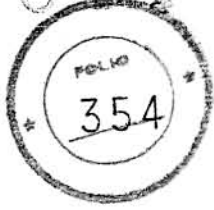


C16 Right-handed nut assembly



C17 Buzzer

0044



C18 Active glass

