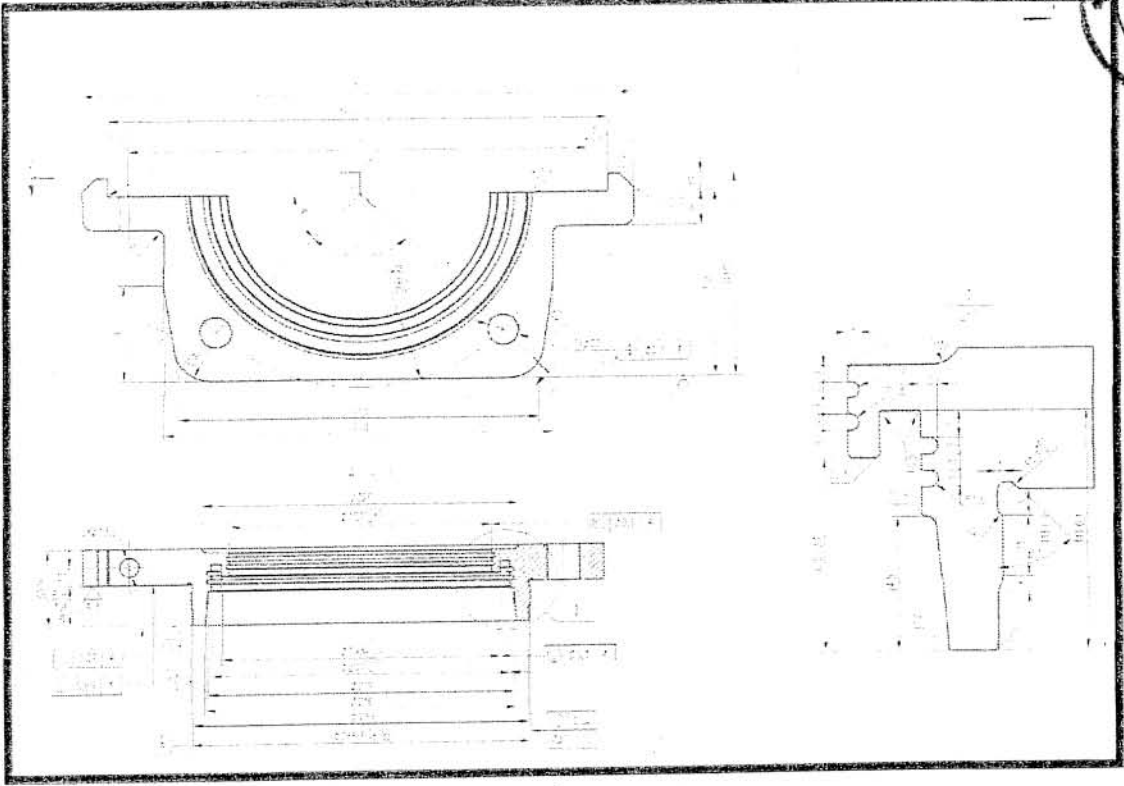
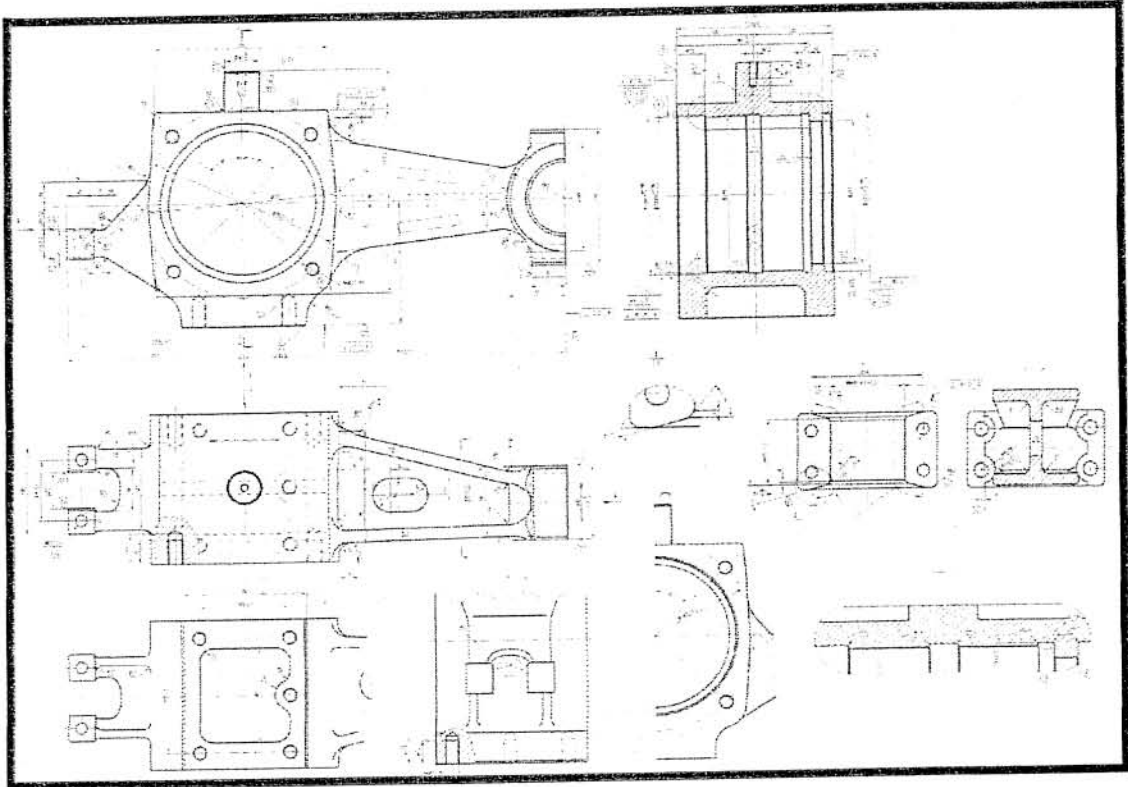


F23 Rear cover of axle box (2)

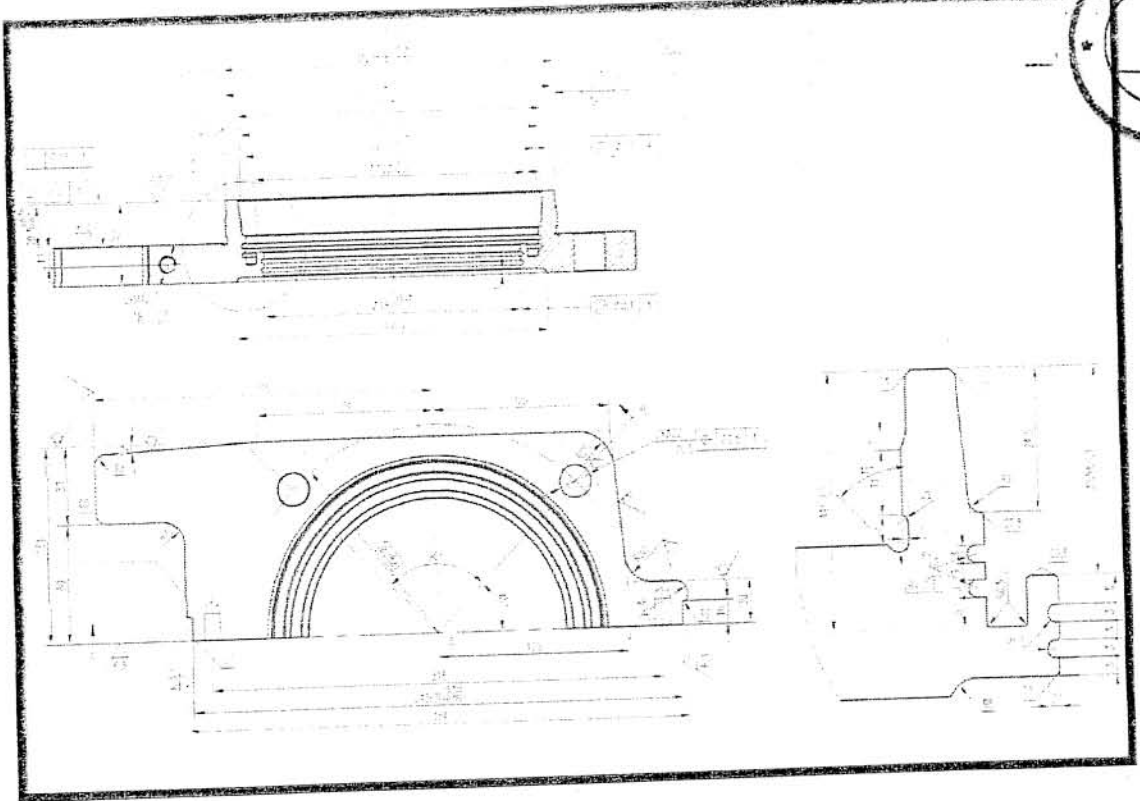


F24 Axle box body (left)

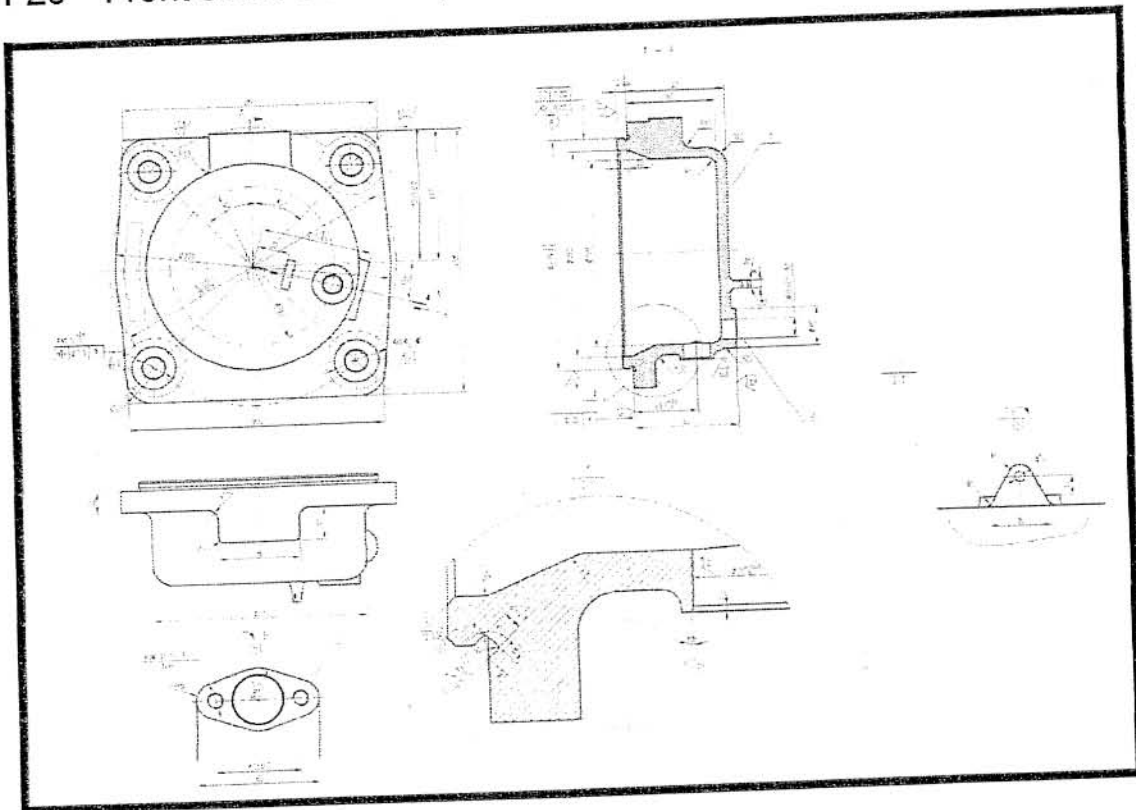


0044
POLID
425

F25 Rear cover of axle box (1) right



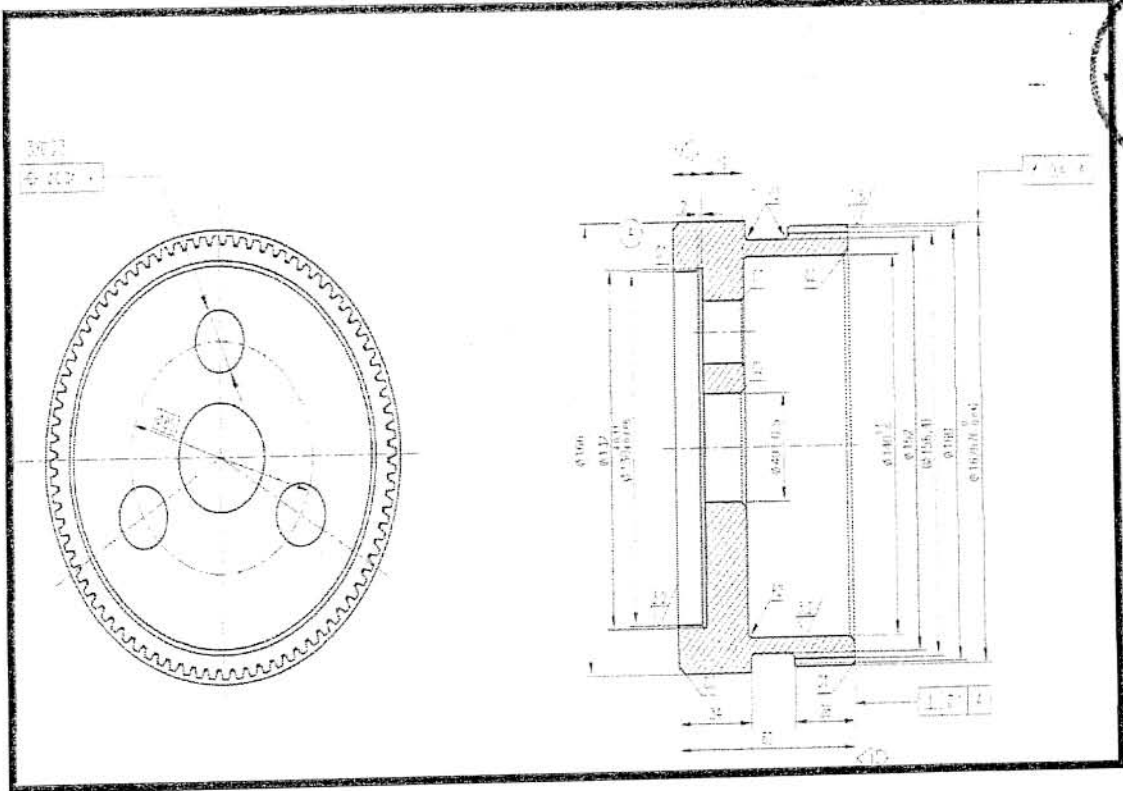
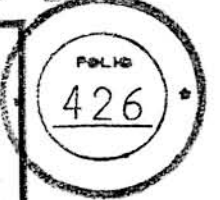
F26 Front cover assembly of brake speed sensor



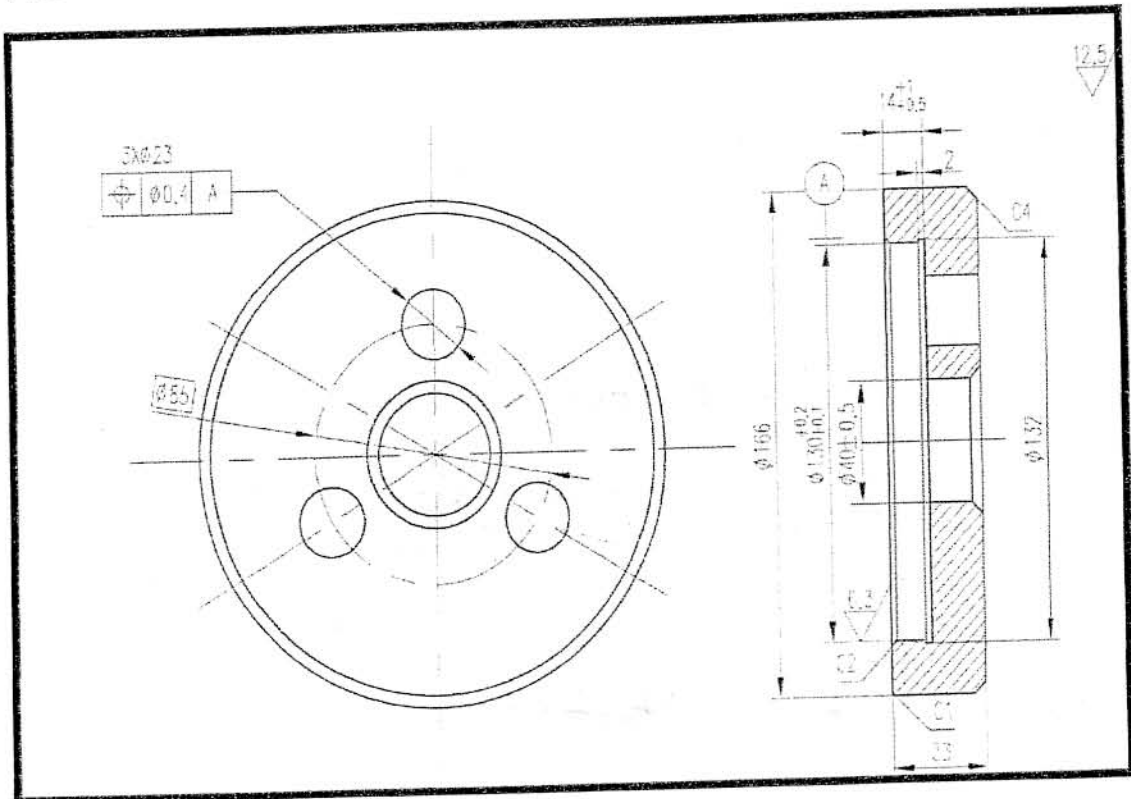


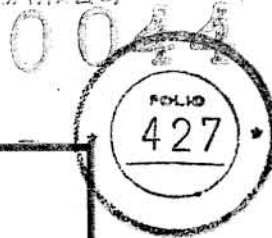
F27 Speed measuring gear cover

0044

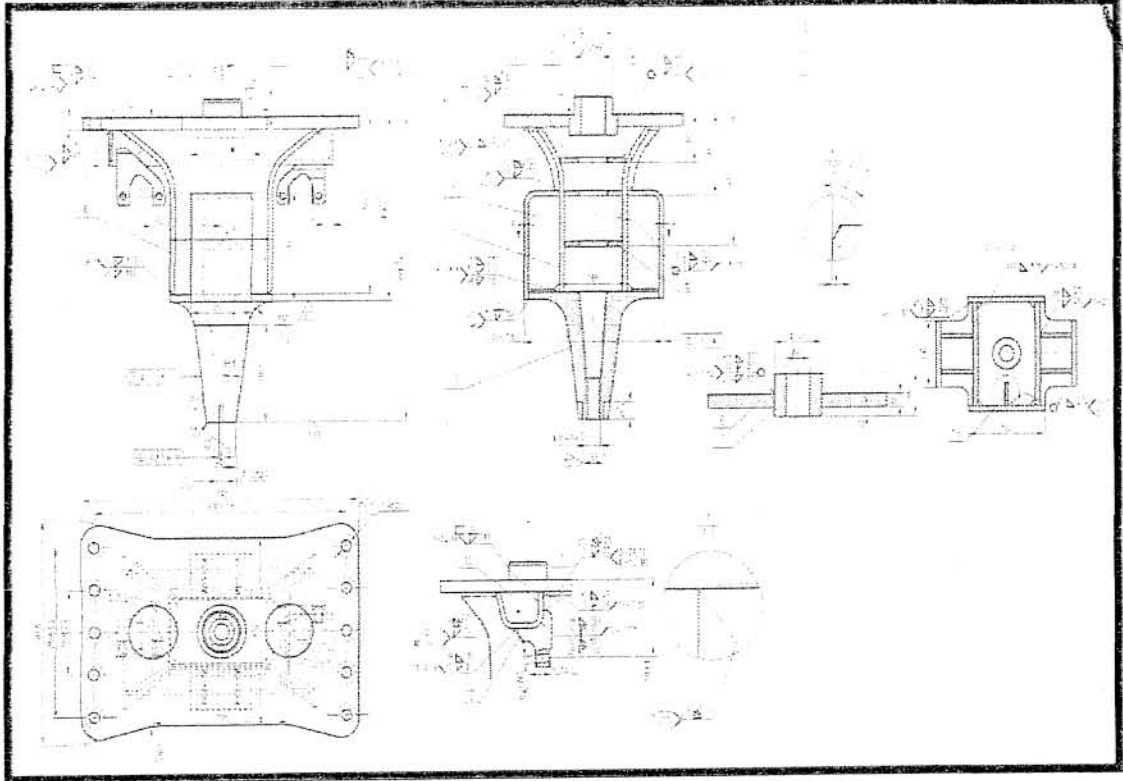


F28 Axle end cover

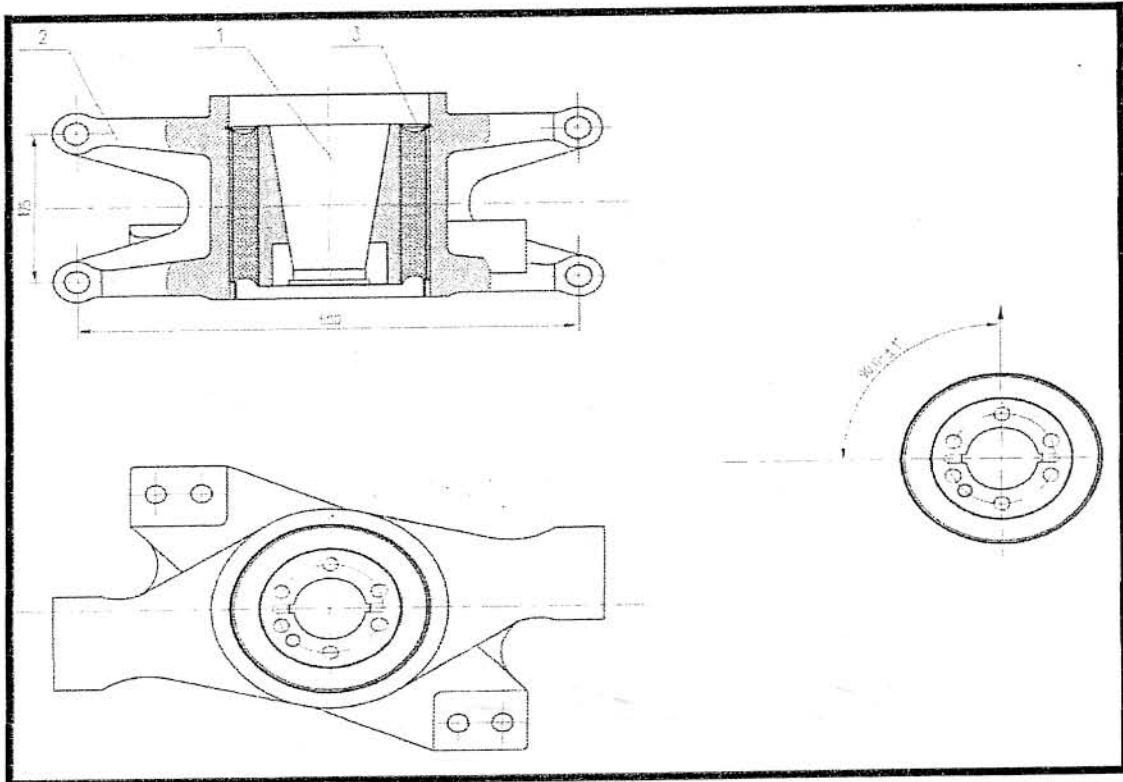




F29 Traction pin assembly



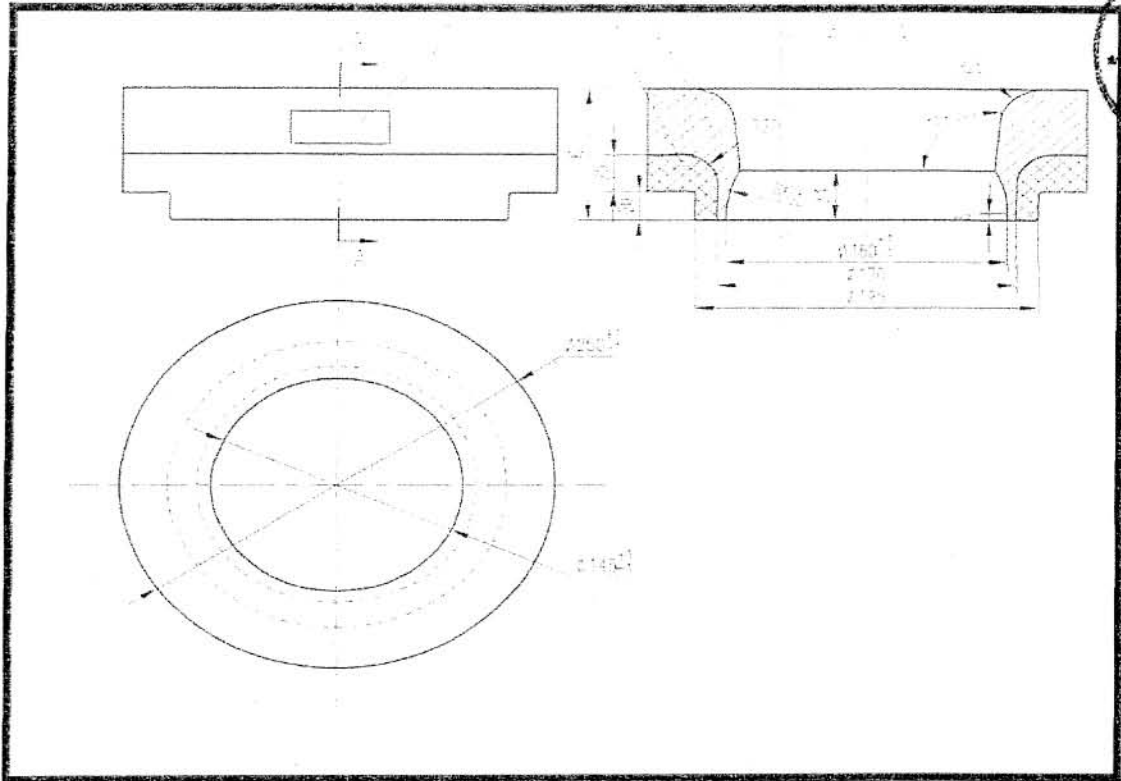
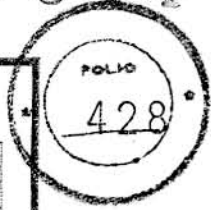
F30 Traction sill assembly



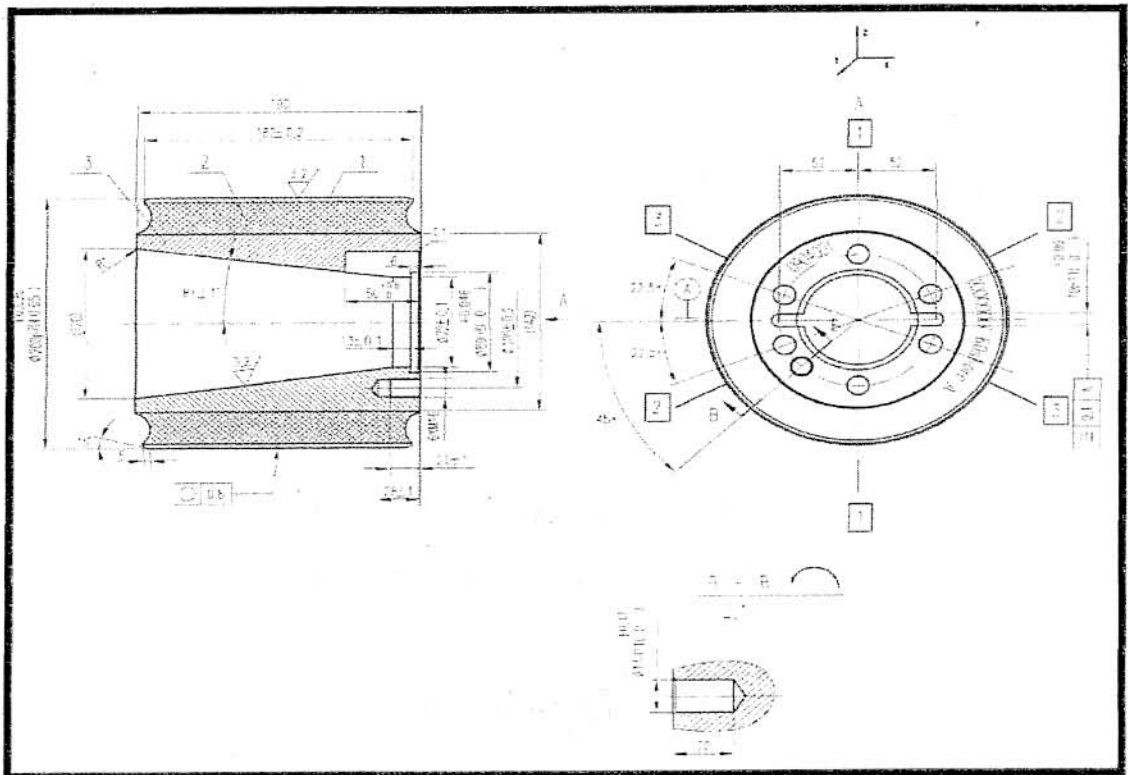


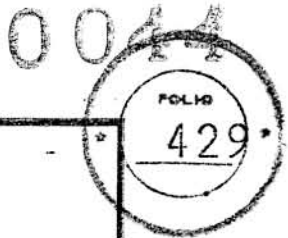
0044

F31 Dust cover

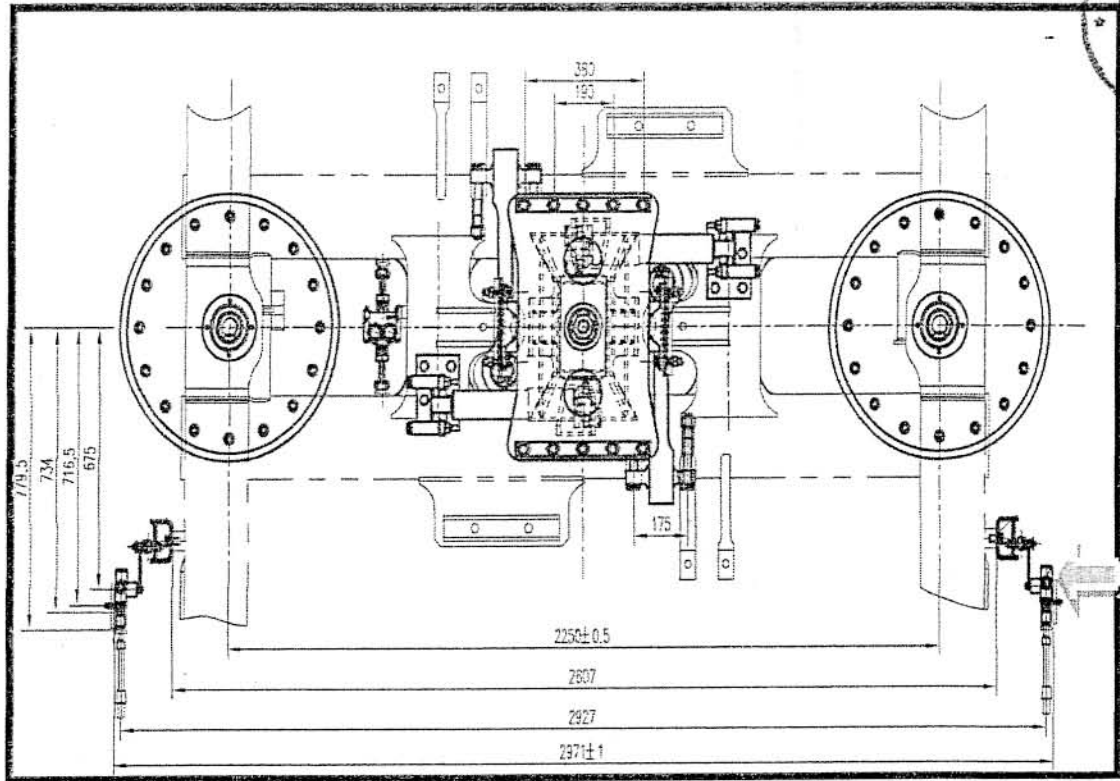


F32 Central pin

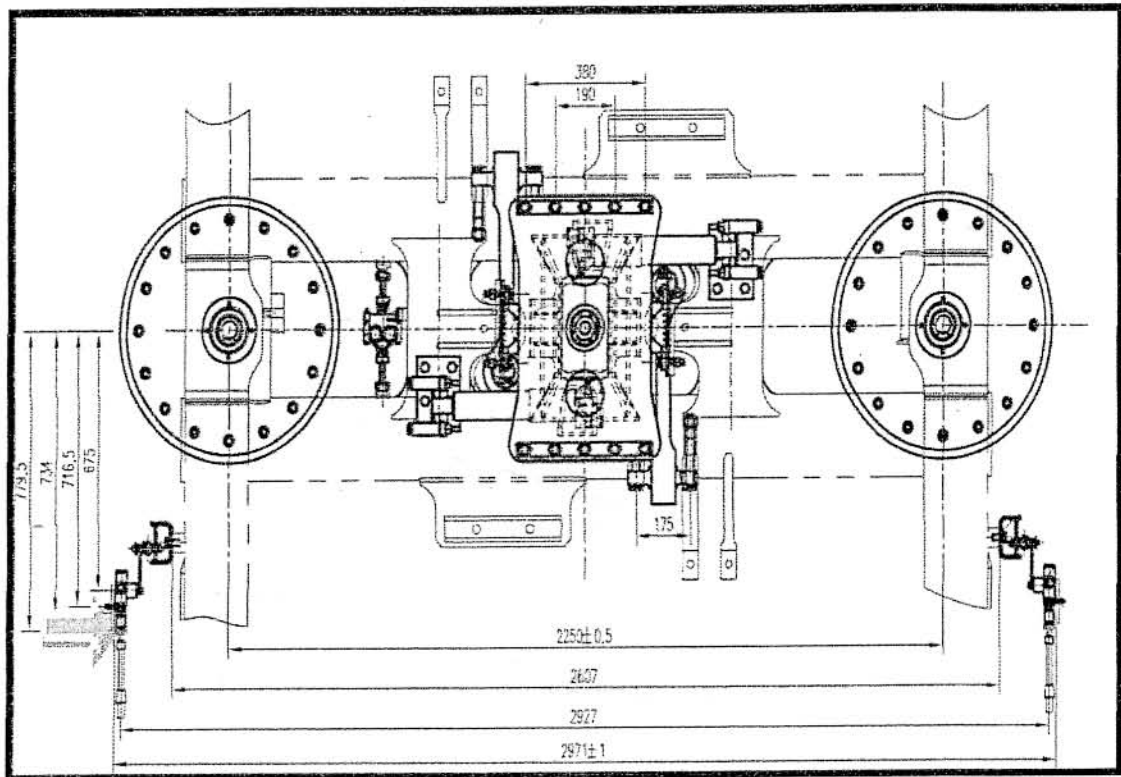


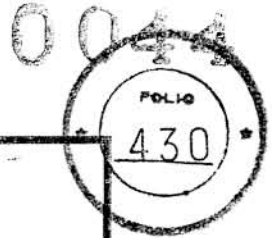


F33 Leveling valve SV1205-GD3/110

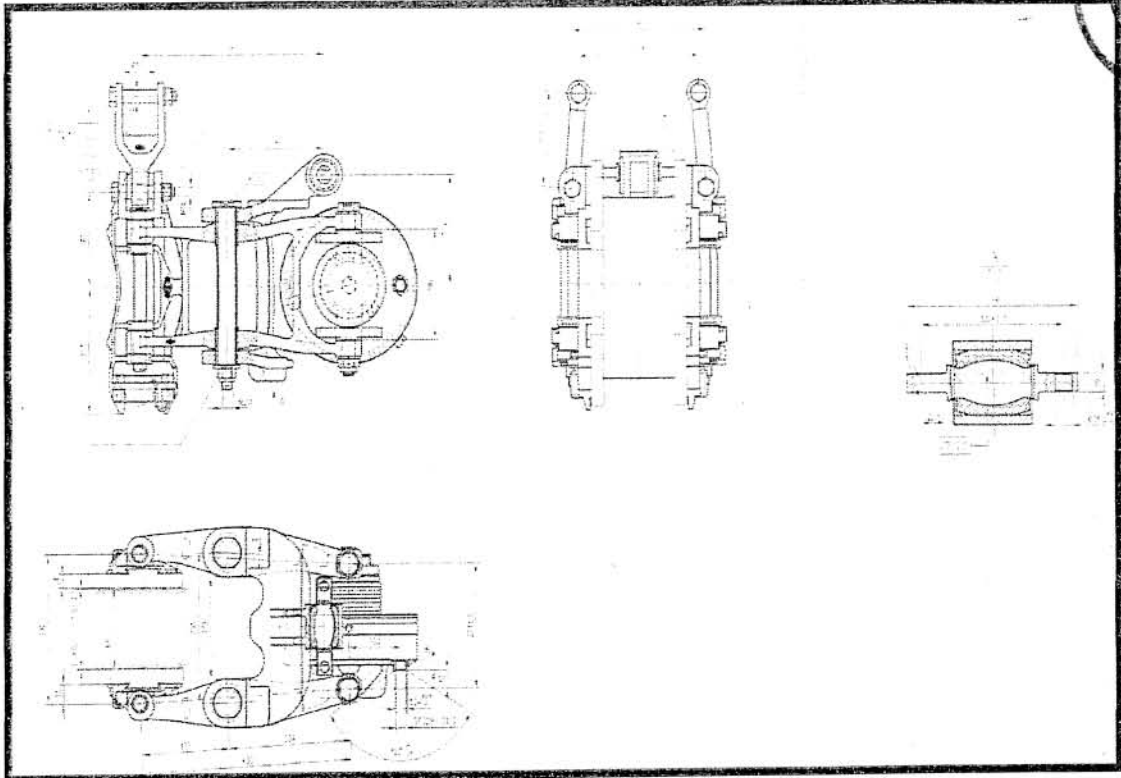


F34 Leveling valve SV1205-GD3/110

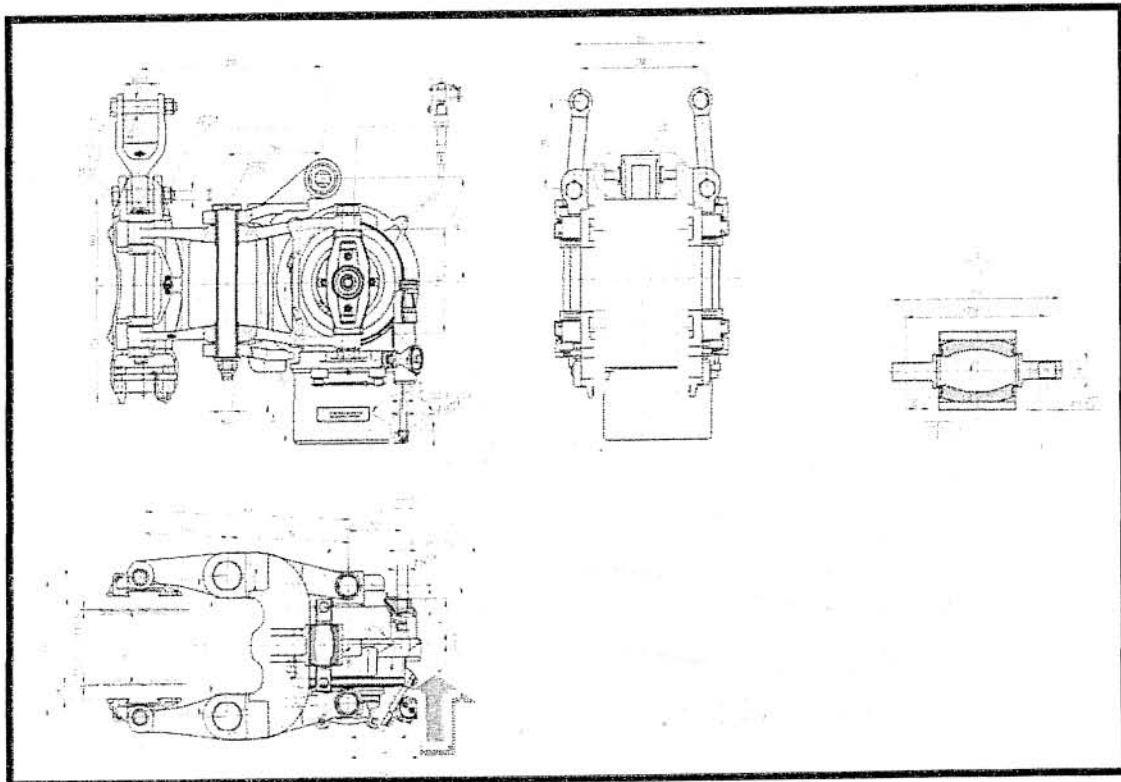


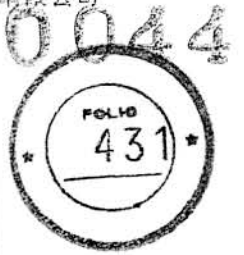


F35 Brake caliper

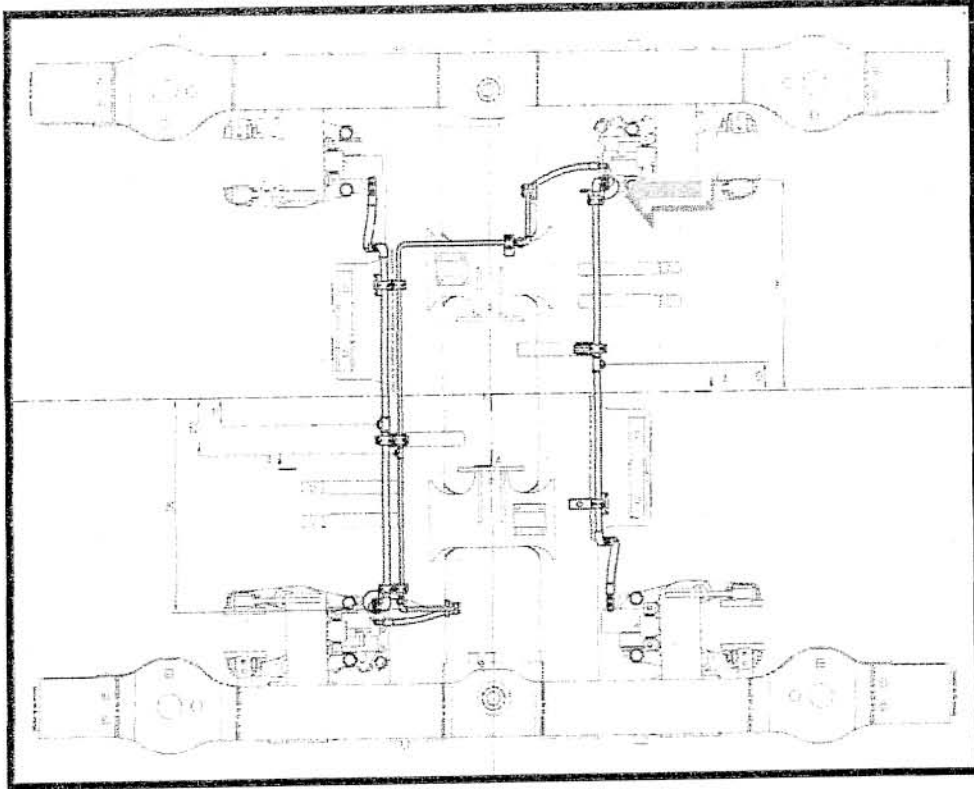


F36 Brake caliper (with parking brake)

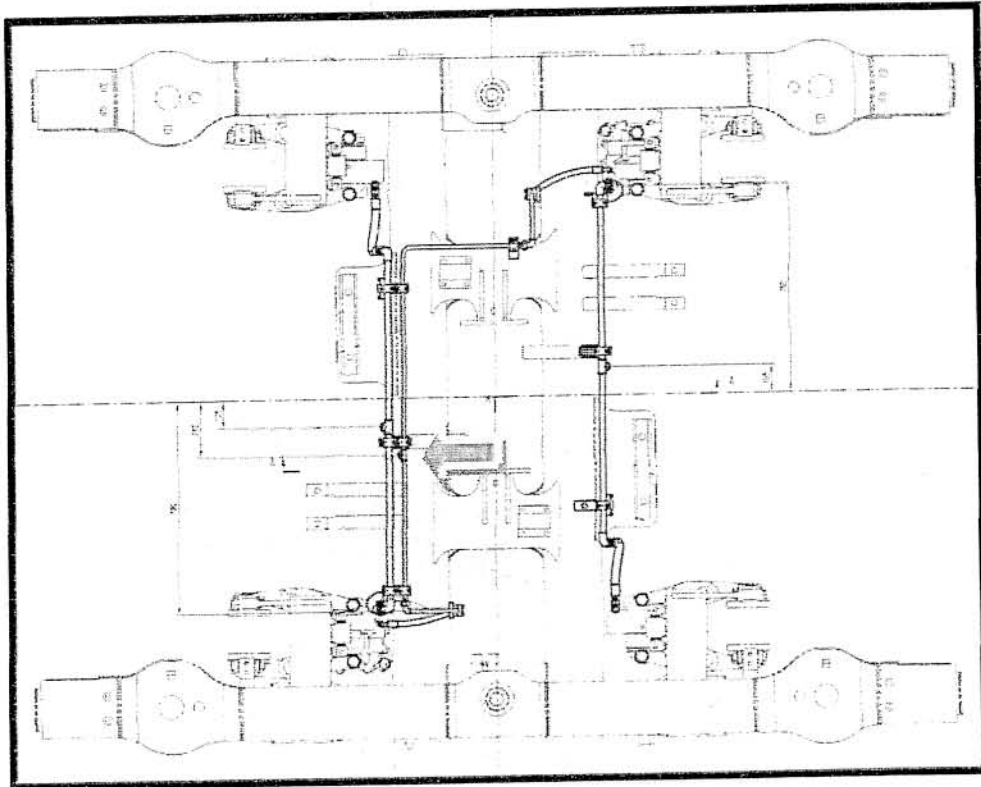


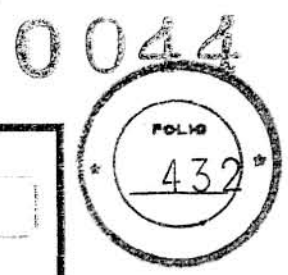


F37 Internal and external elbow joint DN15

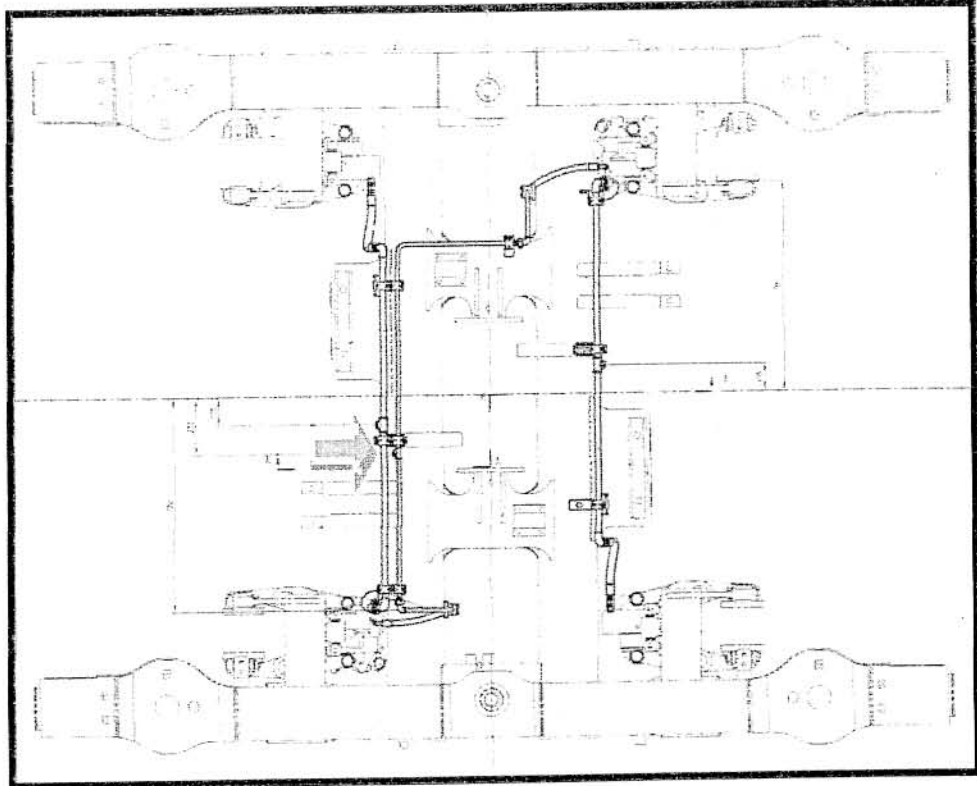


F38 Three-way DN8

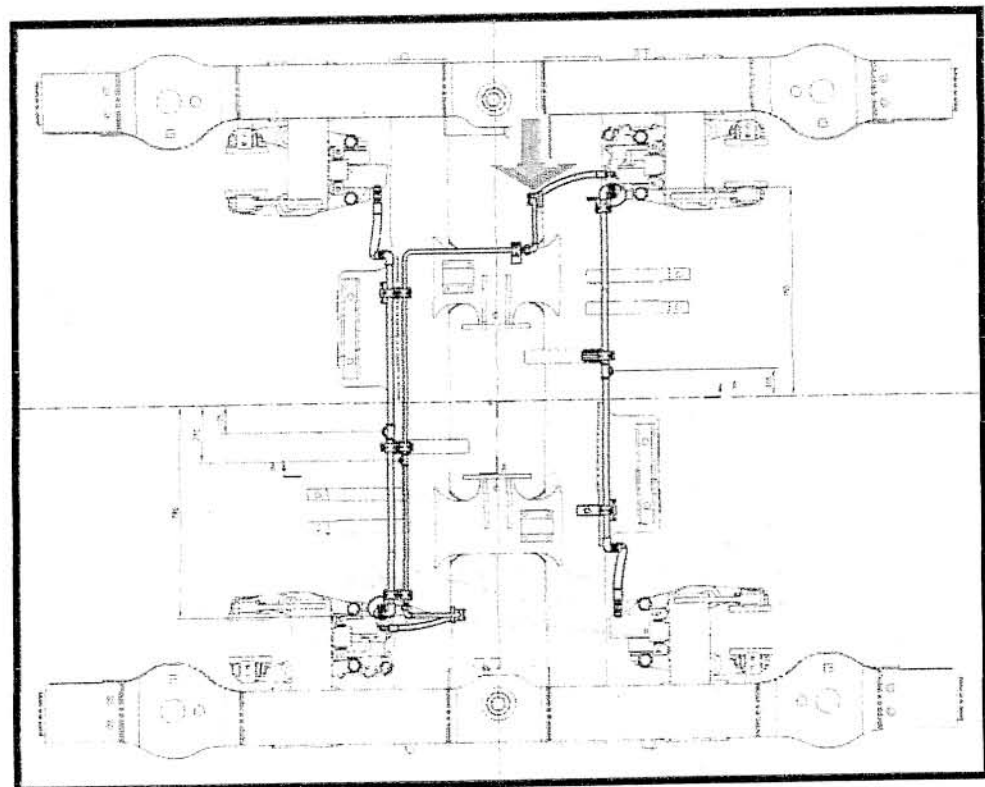




F39 Single pipe clamp 21



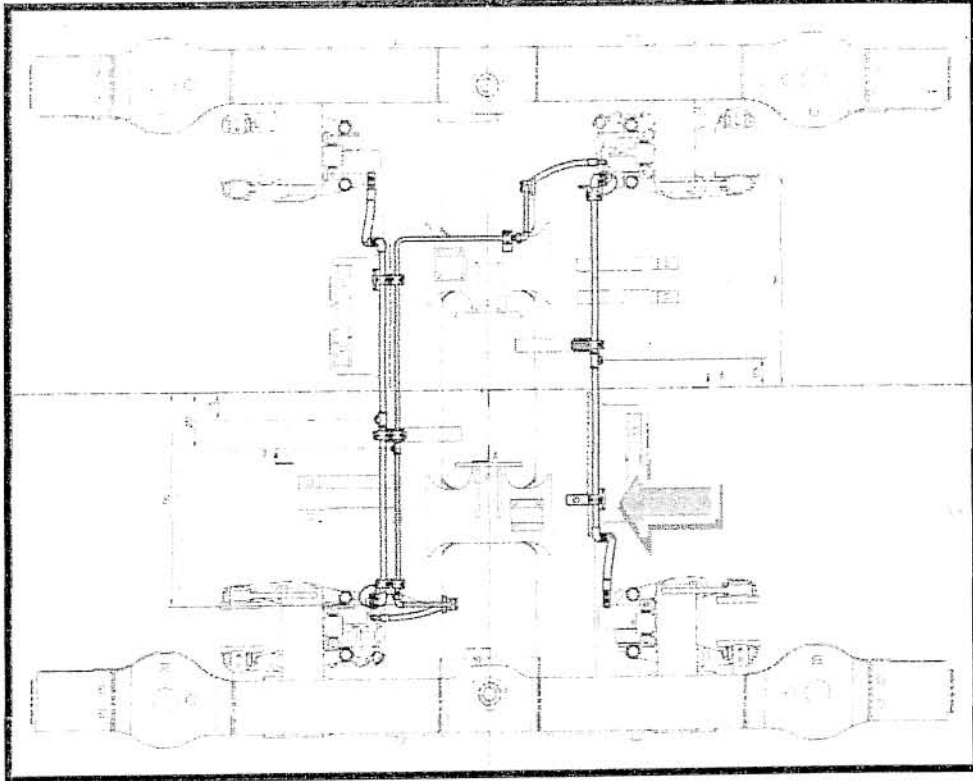
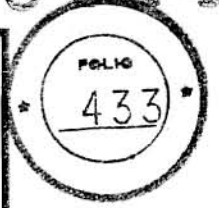
F40 Single pipe clamp 14



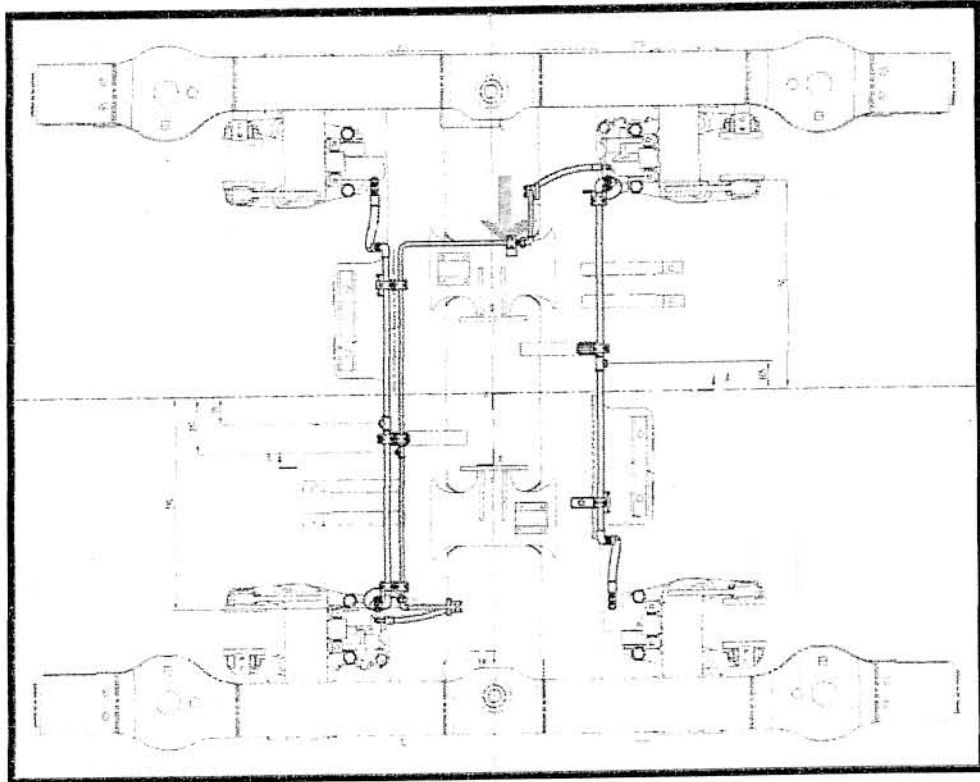


F41 Single pipe clamp 21

0044



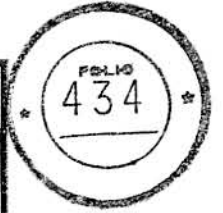
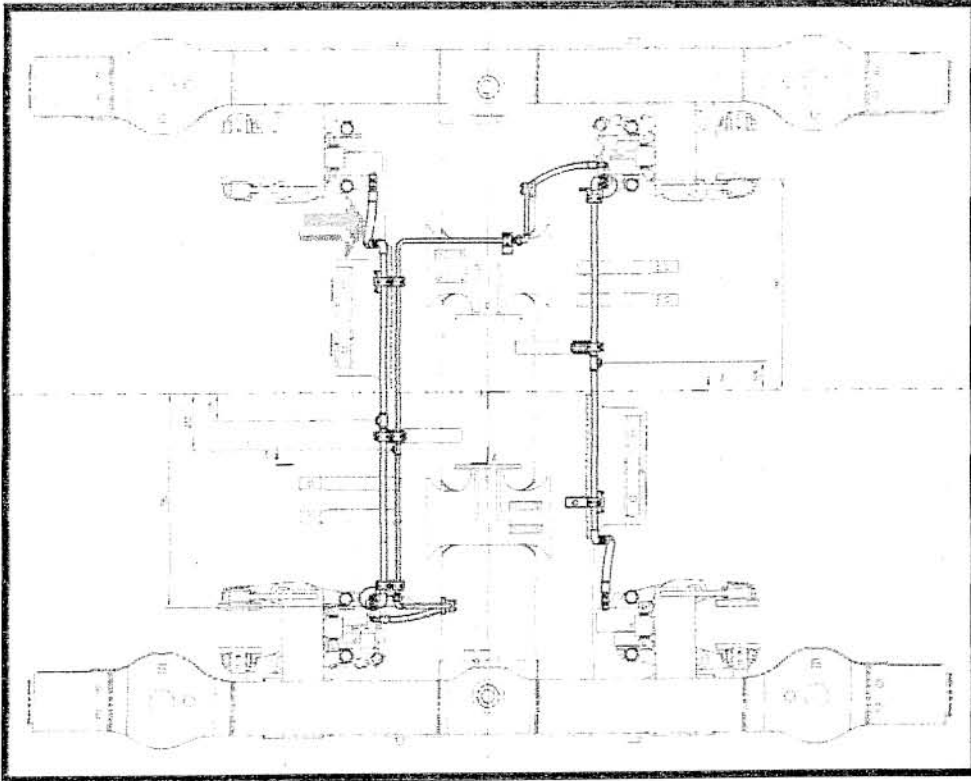
F42 Single pipe clamp 14



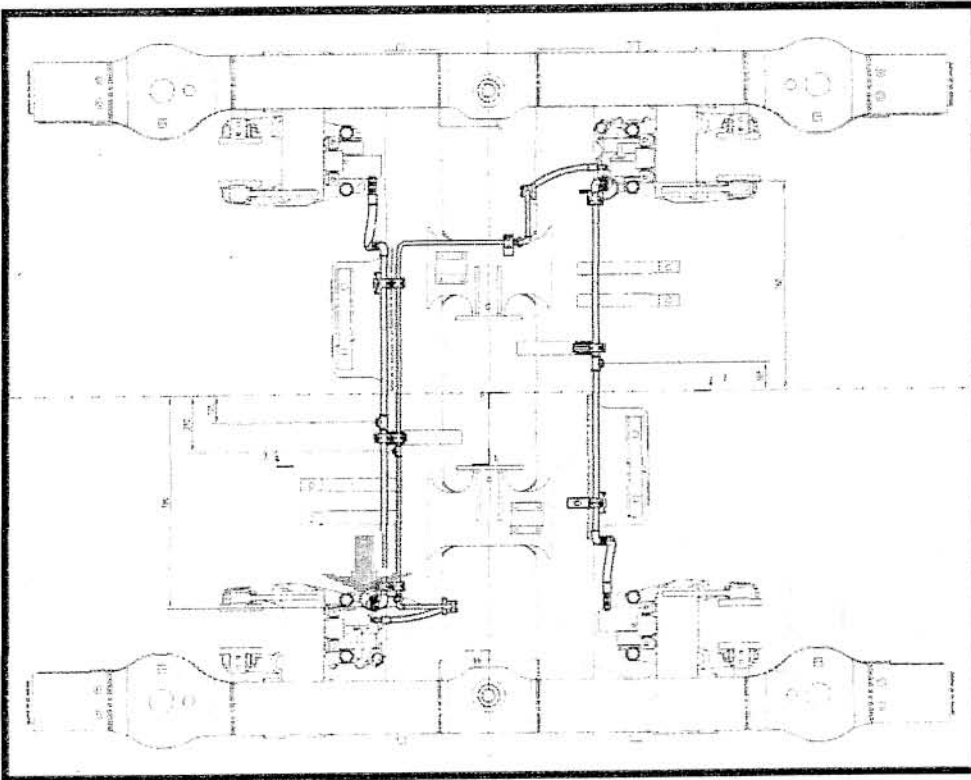


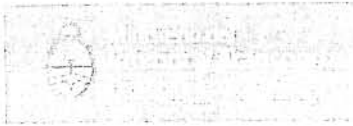
0044

F43 Brake hose L=480



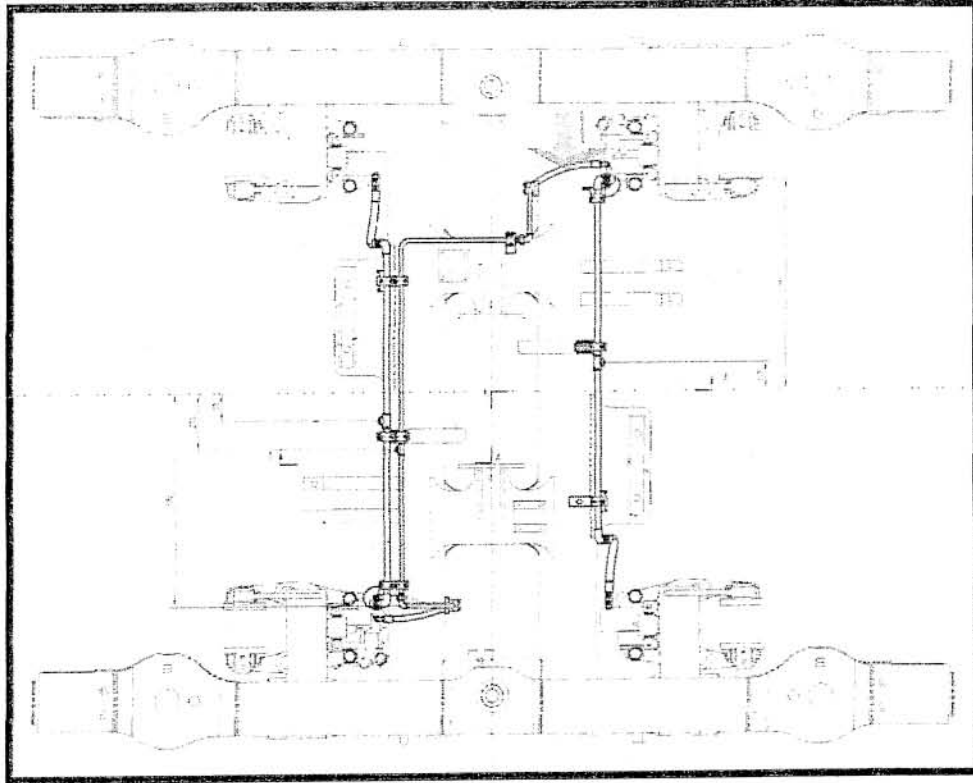
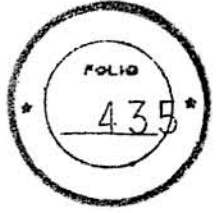
F44 Brake hose L=305



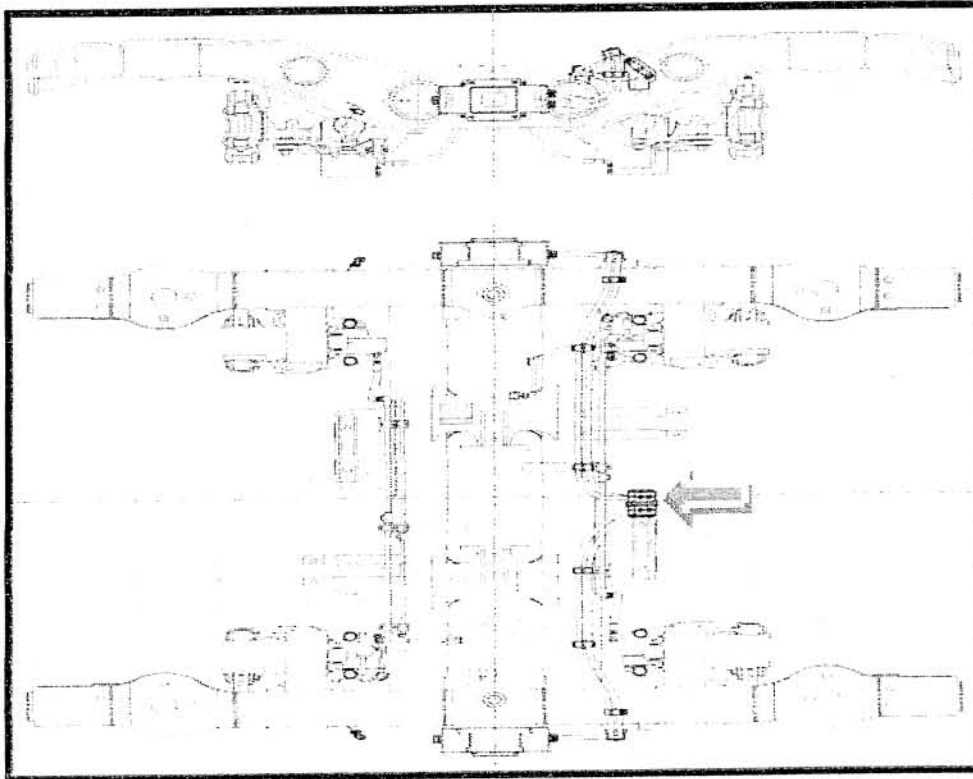


0044

F45 Parking brake hose L=515

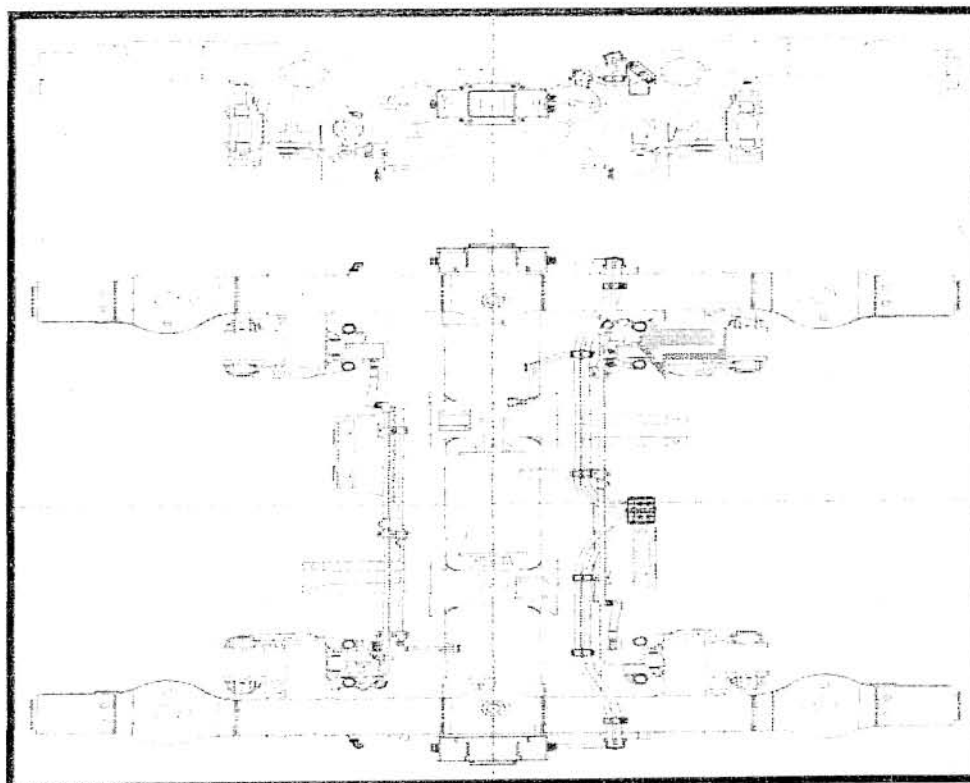
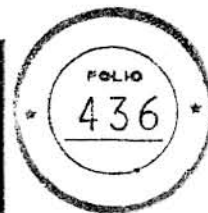


F46 Double-wire clamp

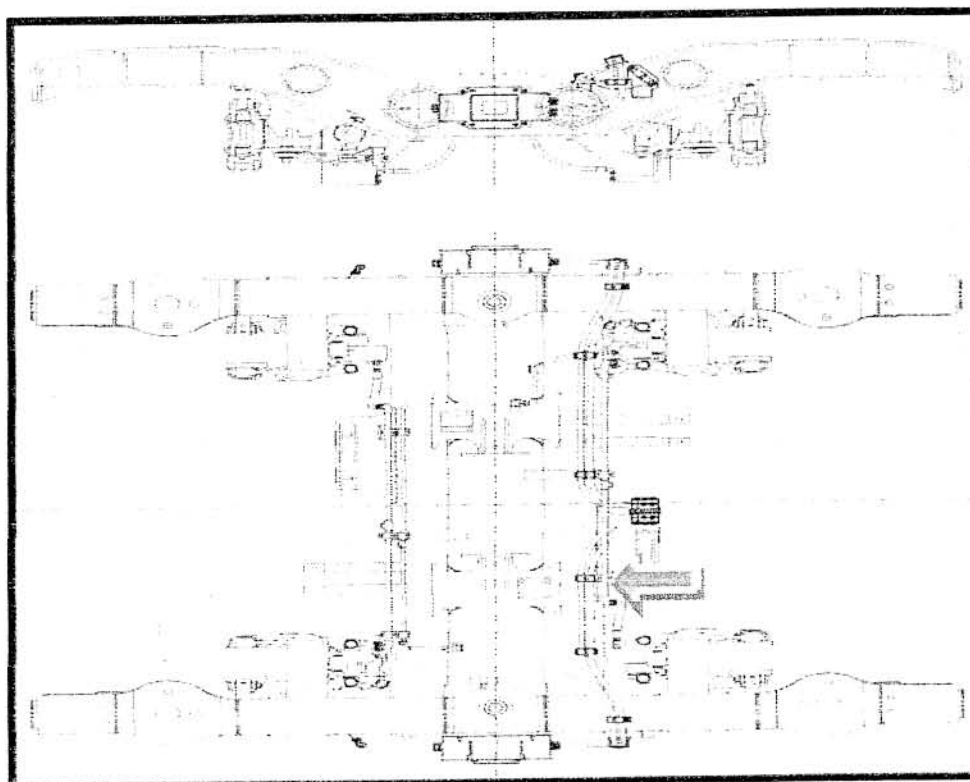


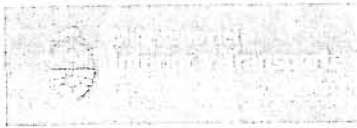


F47 Double-wire clamp



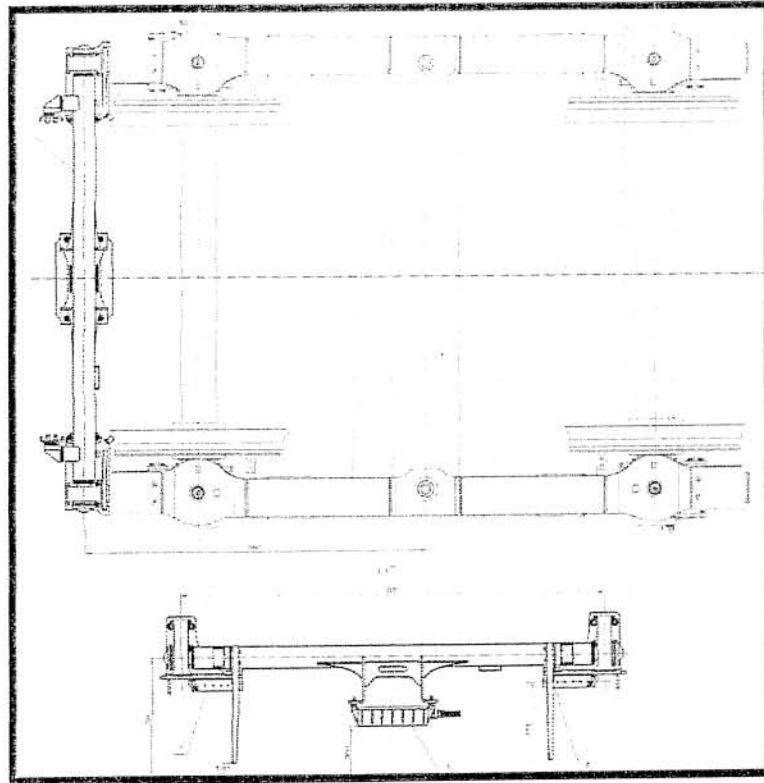
F48 Double-wire clamp



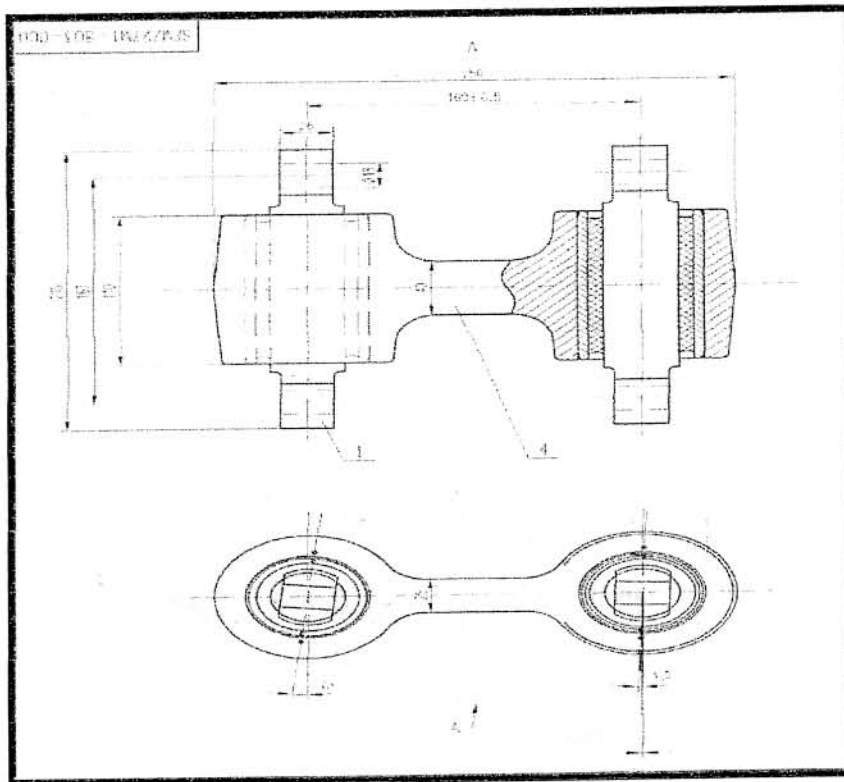


F49 Accessory installation

0044
FOLIO
437

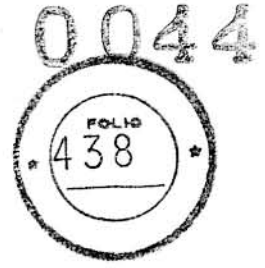
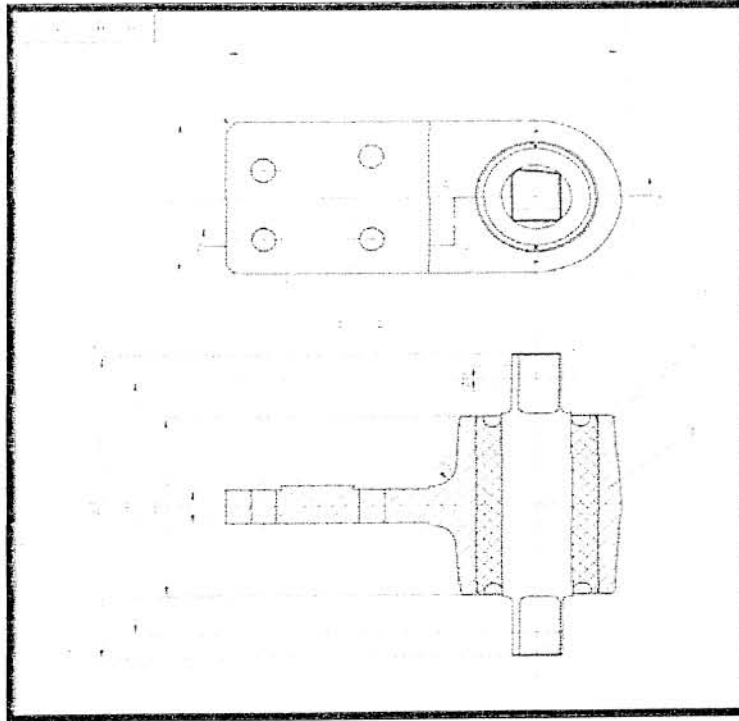


F50 Steeve assembly of current collect device

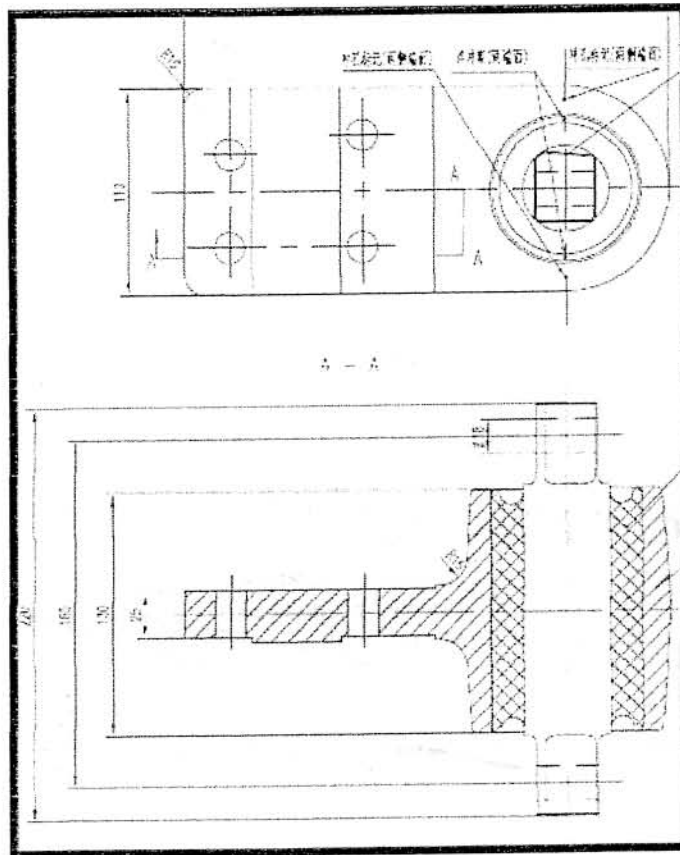




F51 Single node installation (left)



F52 Single node installation (right)

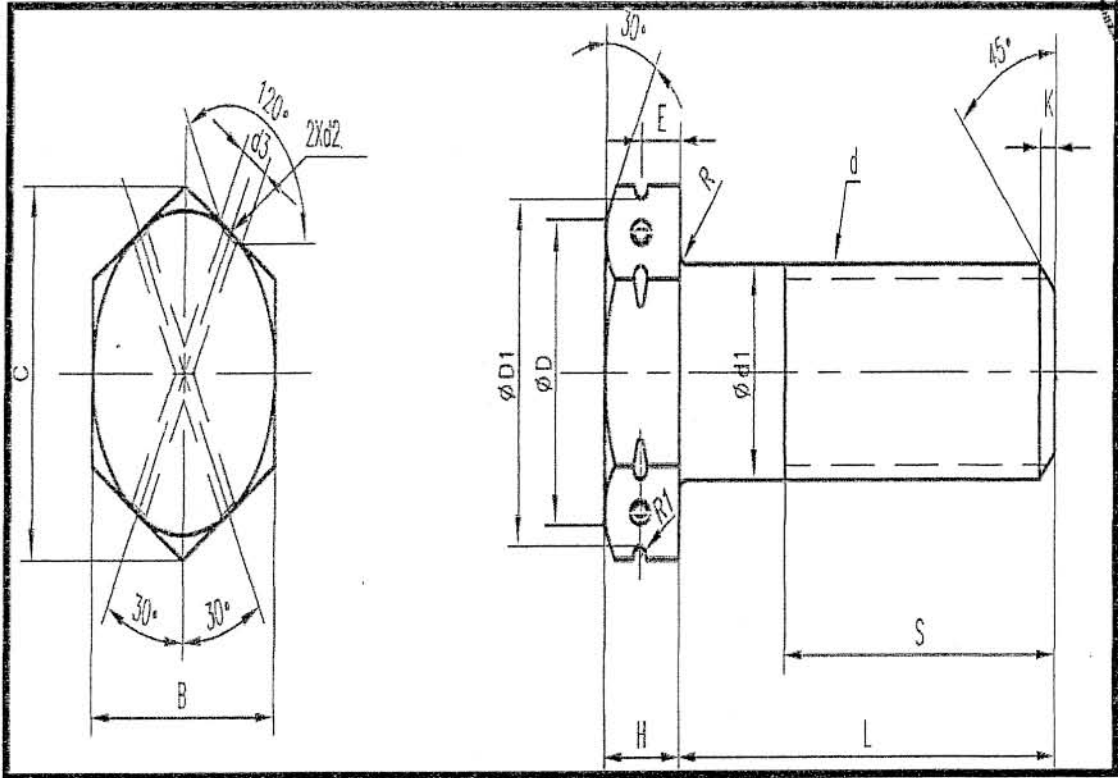
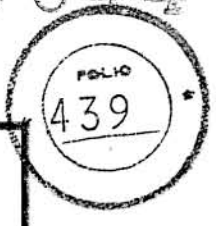




F53 Bolt M20X170 (Dacromet)

F58 Bolt M16X110 (Dacromet)

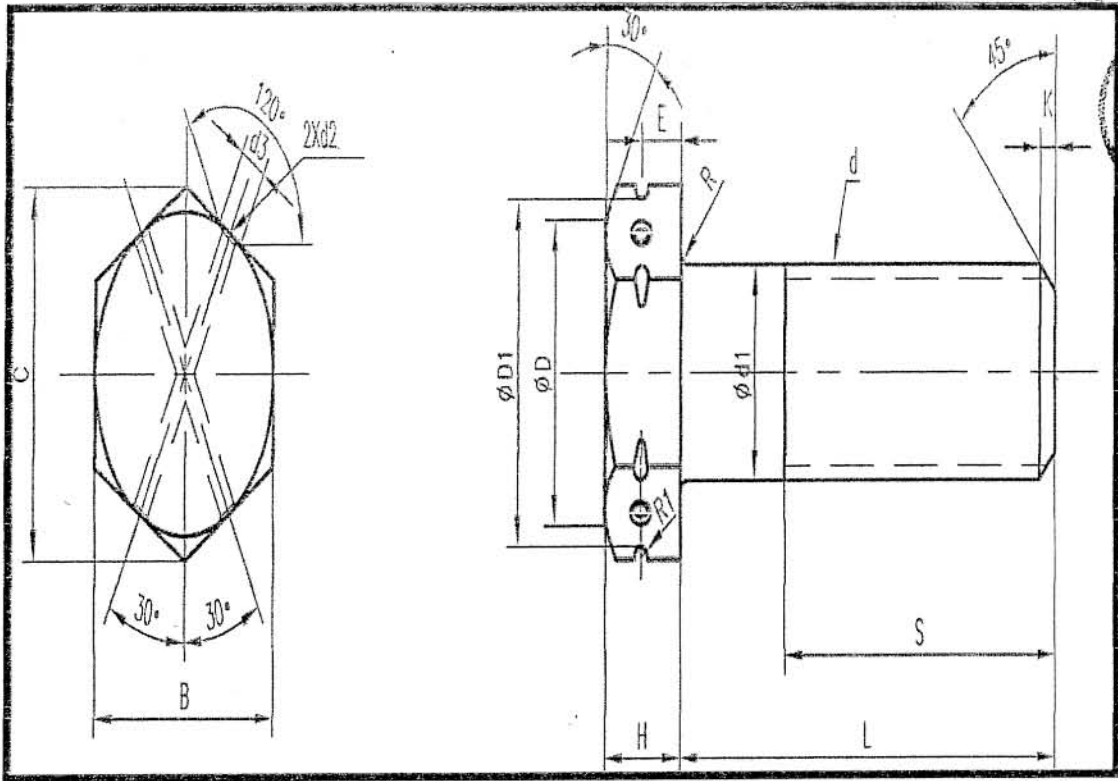
0044



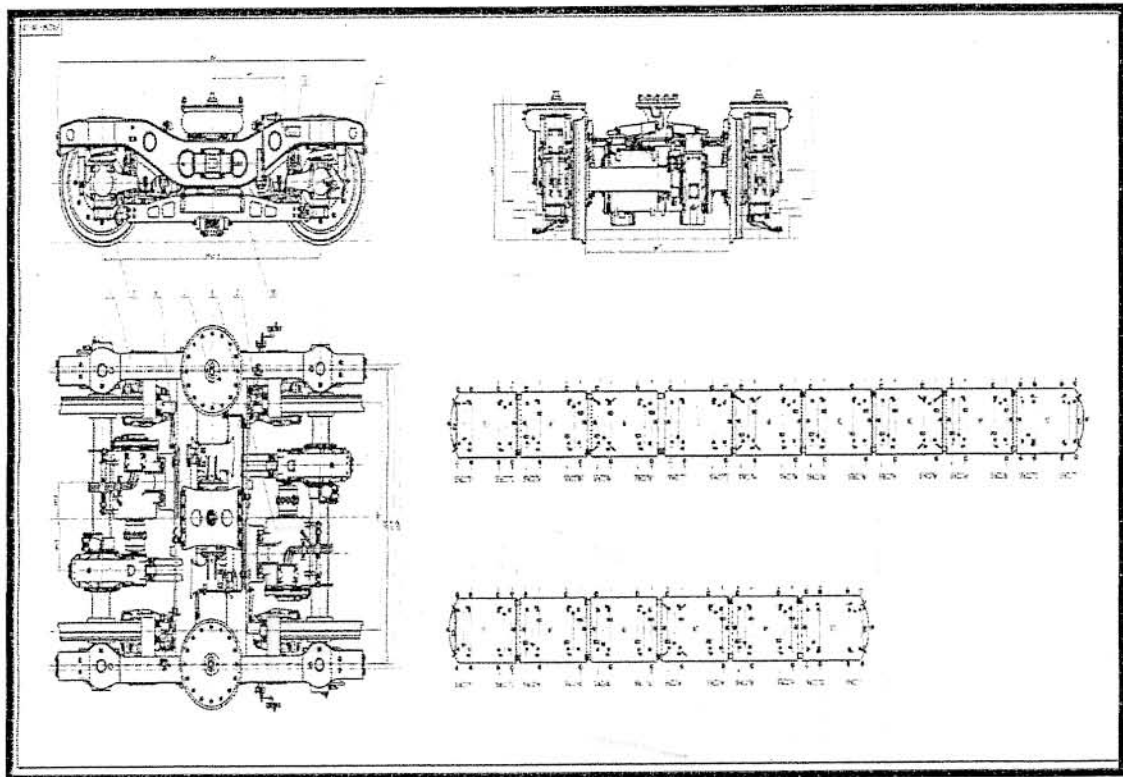
F59 Bolt M16X82 (Dacromet)



0044



F60 Motor bogie assembly



F61 Trailer bogie assembly

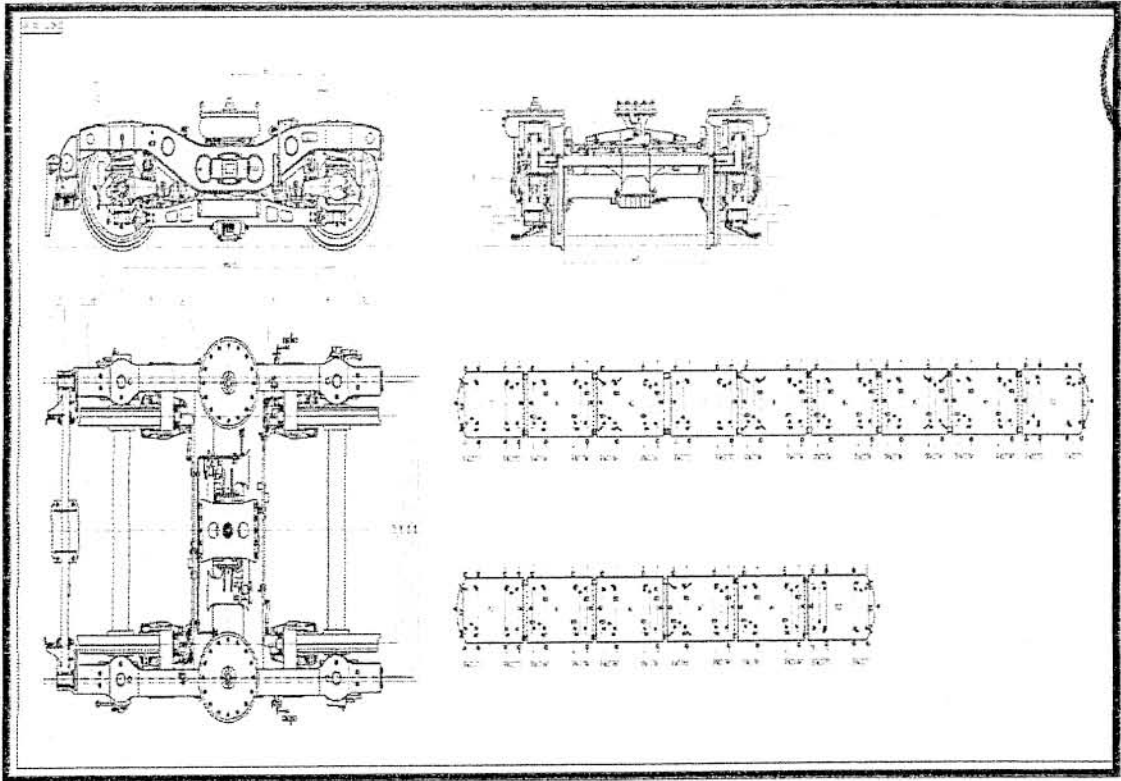
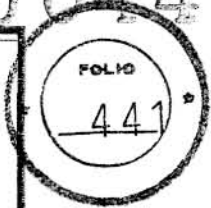


Part F Bogie

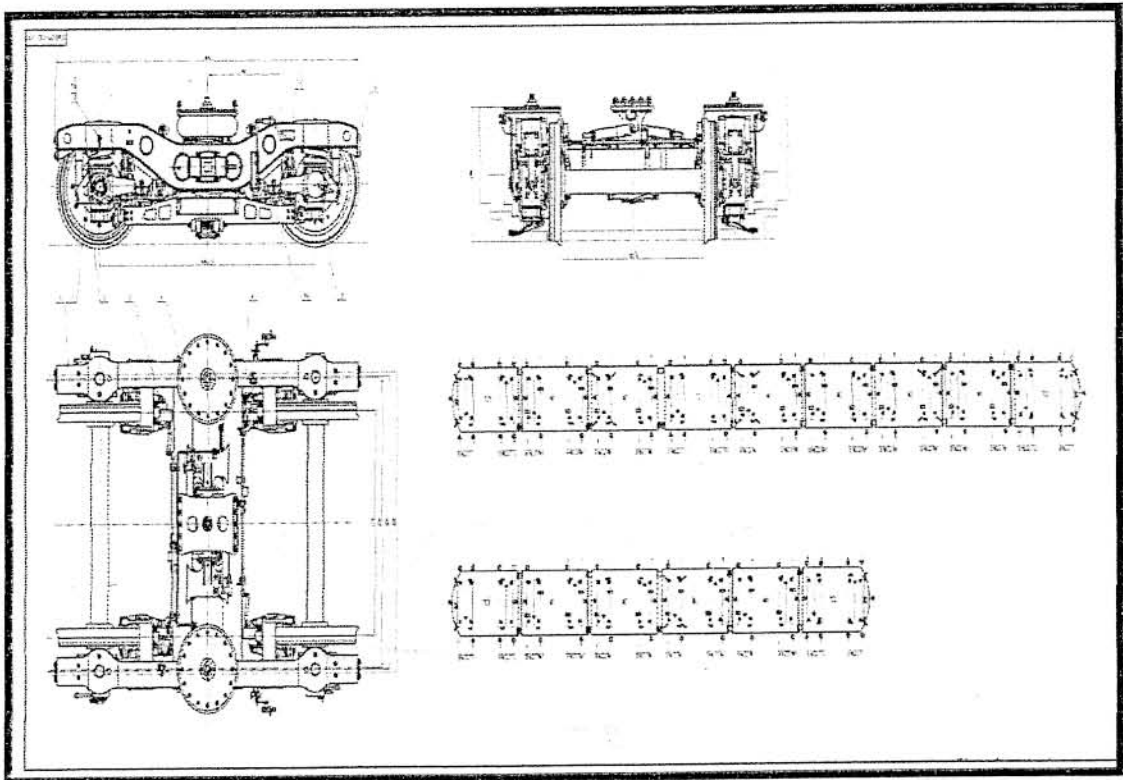
中国南车

南车青岛四方机车车辆股份有限公司
CSR QINGDAO SIFANG CO. LTD

0044



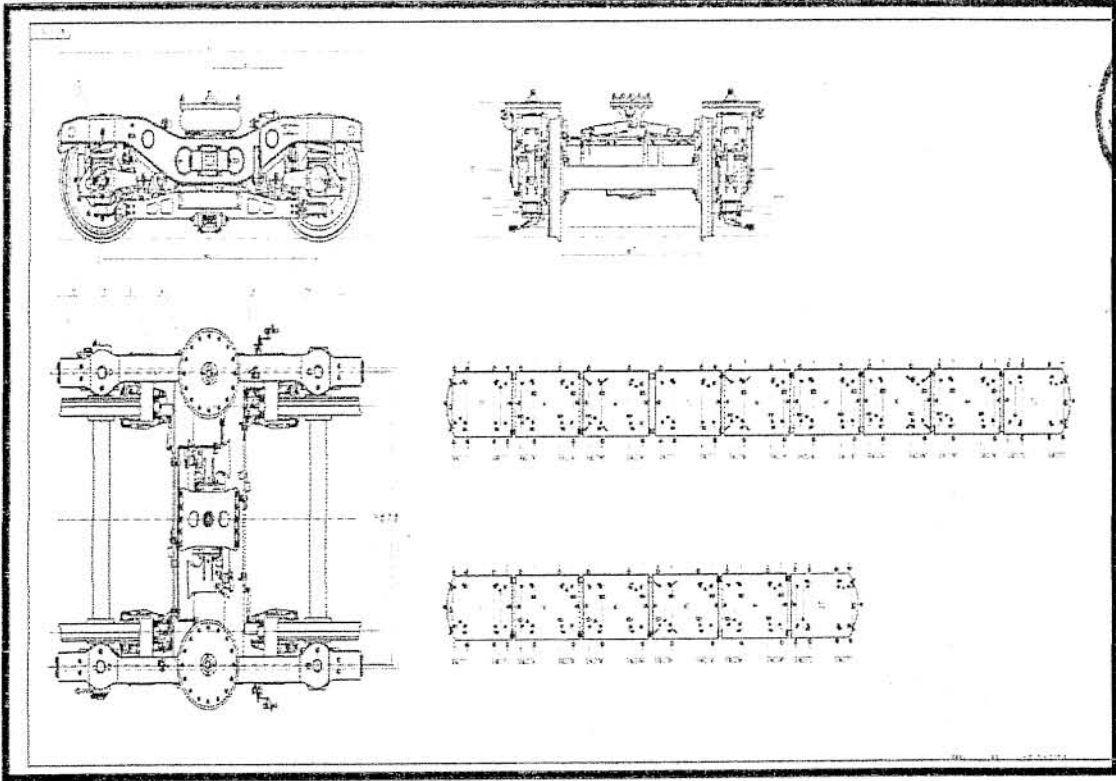
F62 Trailer bogie assembly



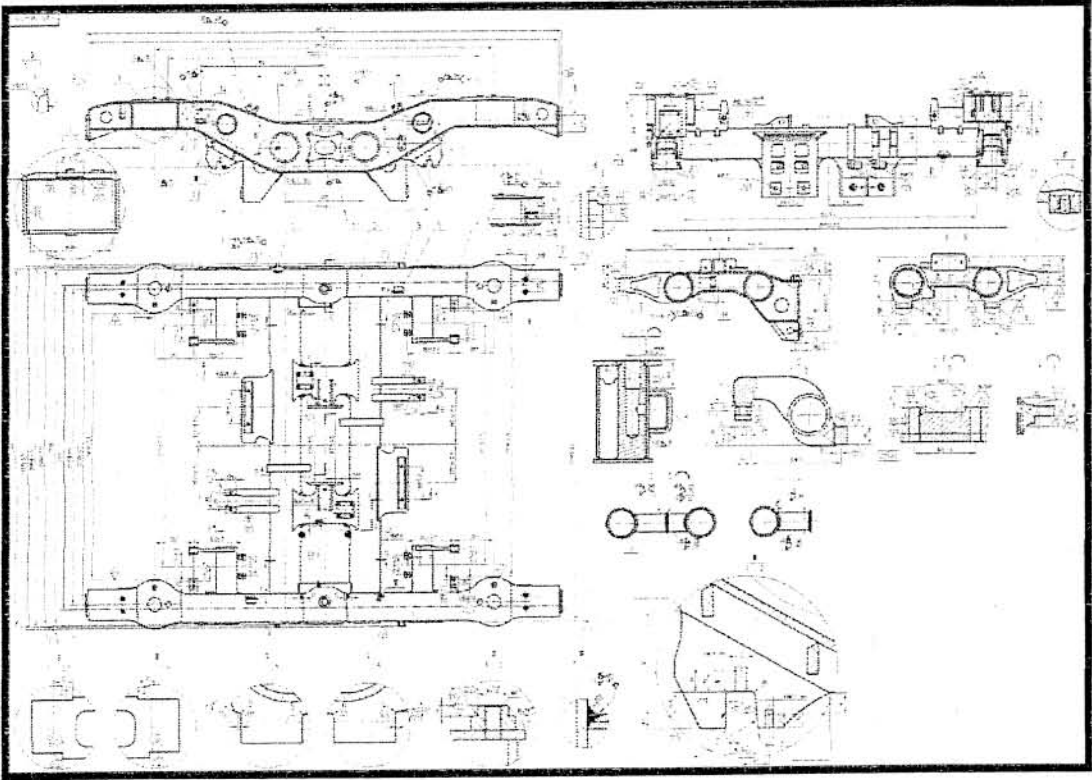
F63 Trailer bogie assembly



0044



F64 Motor frame assembly



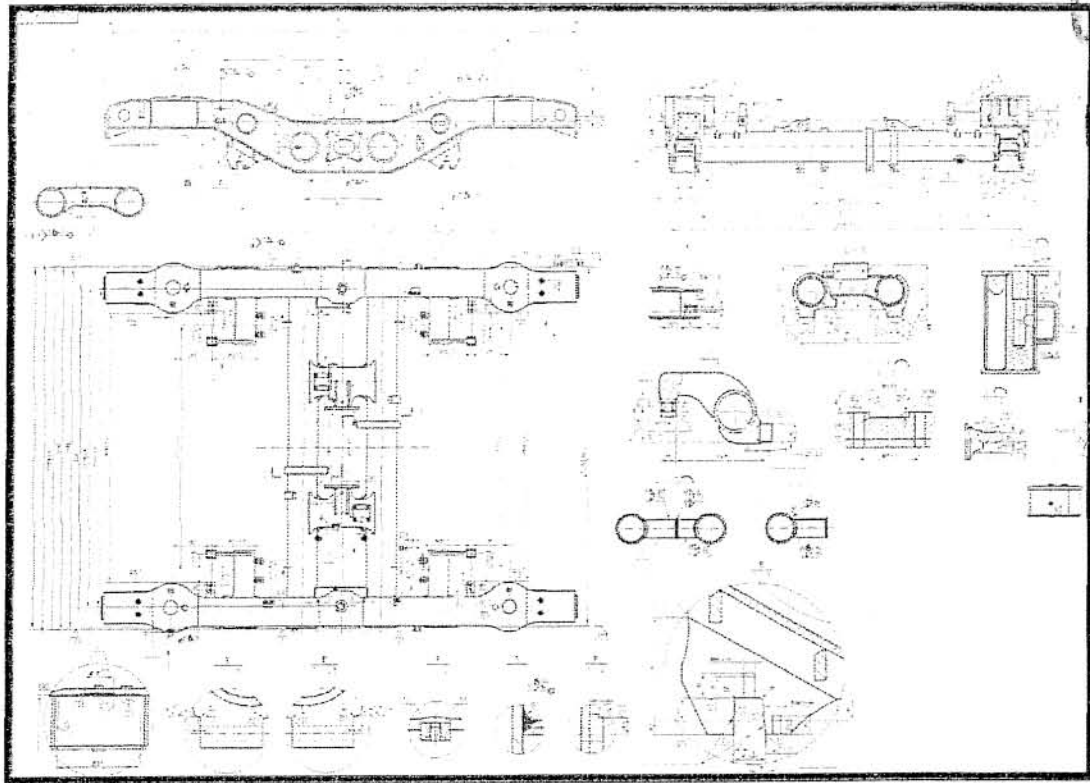
F65 Trailer frame assembly



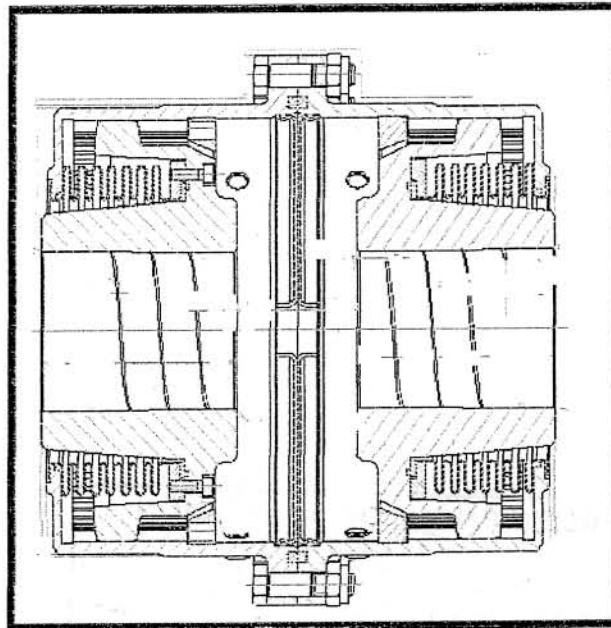
Part F Bogie

中国南车

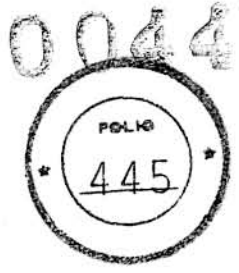
南车青岛四方机车车辆股份有限公司
CSR QINGDAO SIFANG CO. LTD



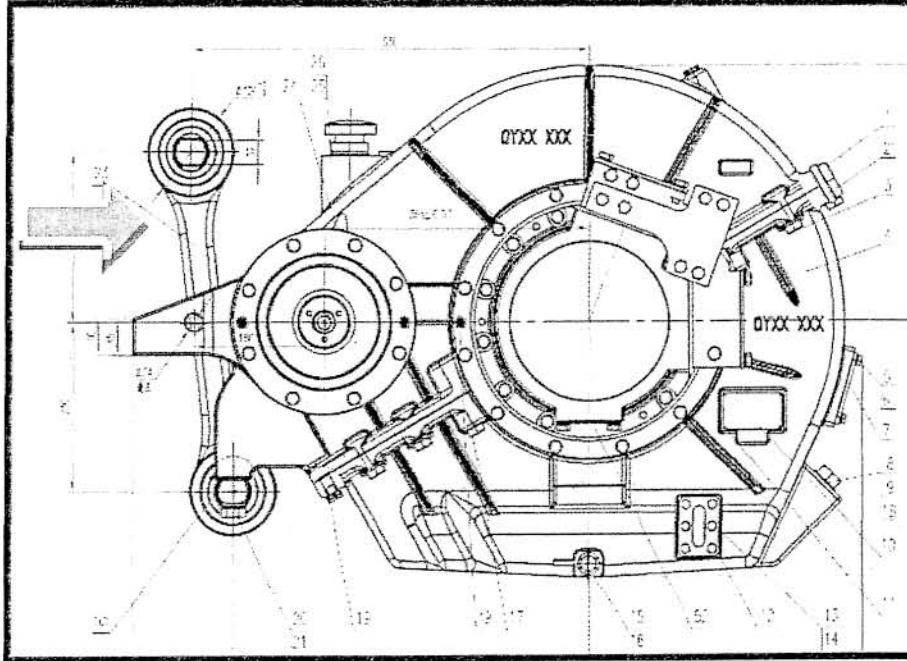
F67 Coupling



F68 Coupling

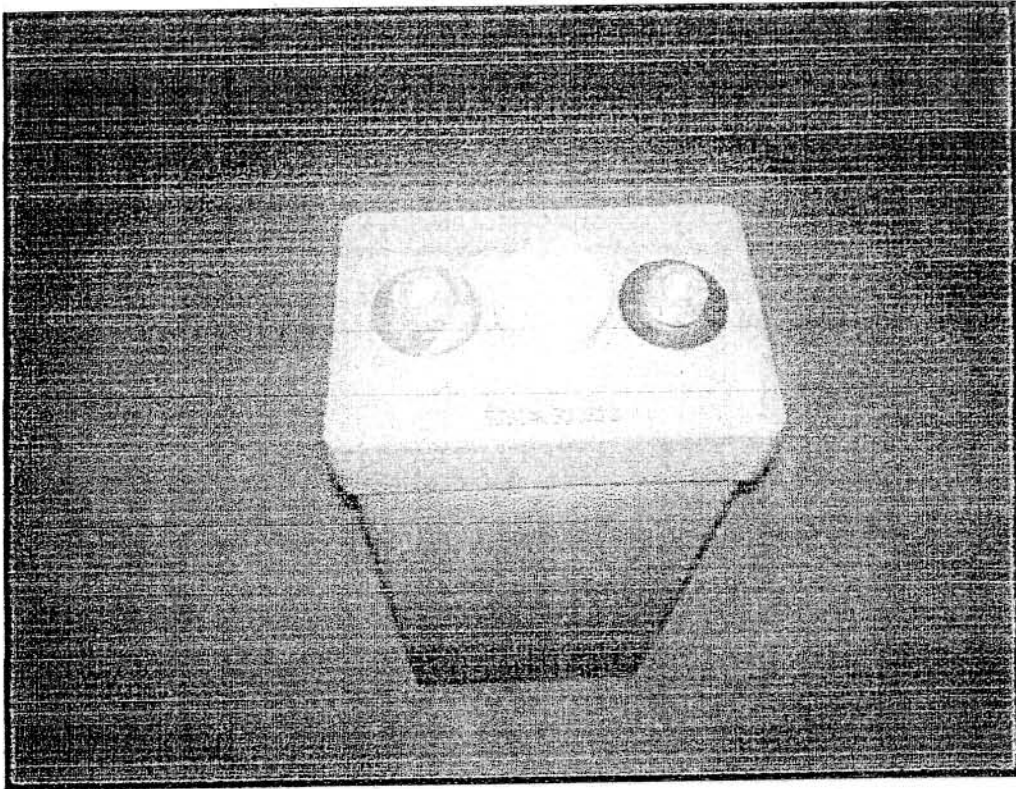
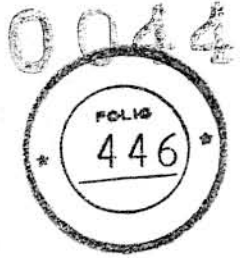


F70 Silentblock traction Connecting Rod

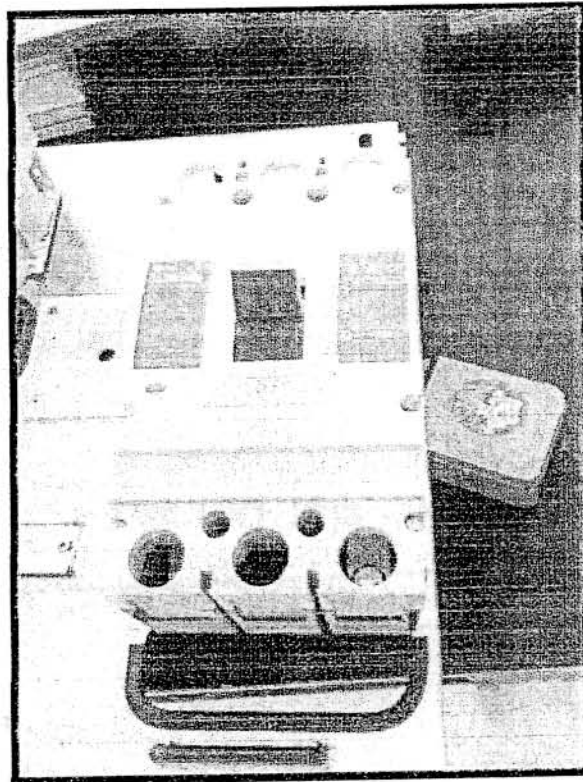


Part G

G1 Battery unit



G2 Battery unit accessories



G3 DC contactor